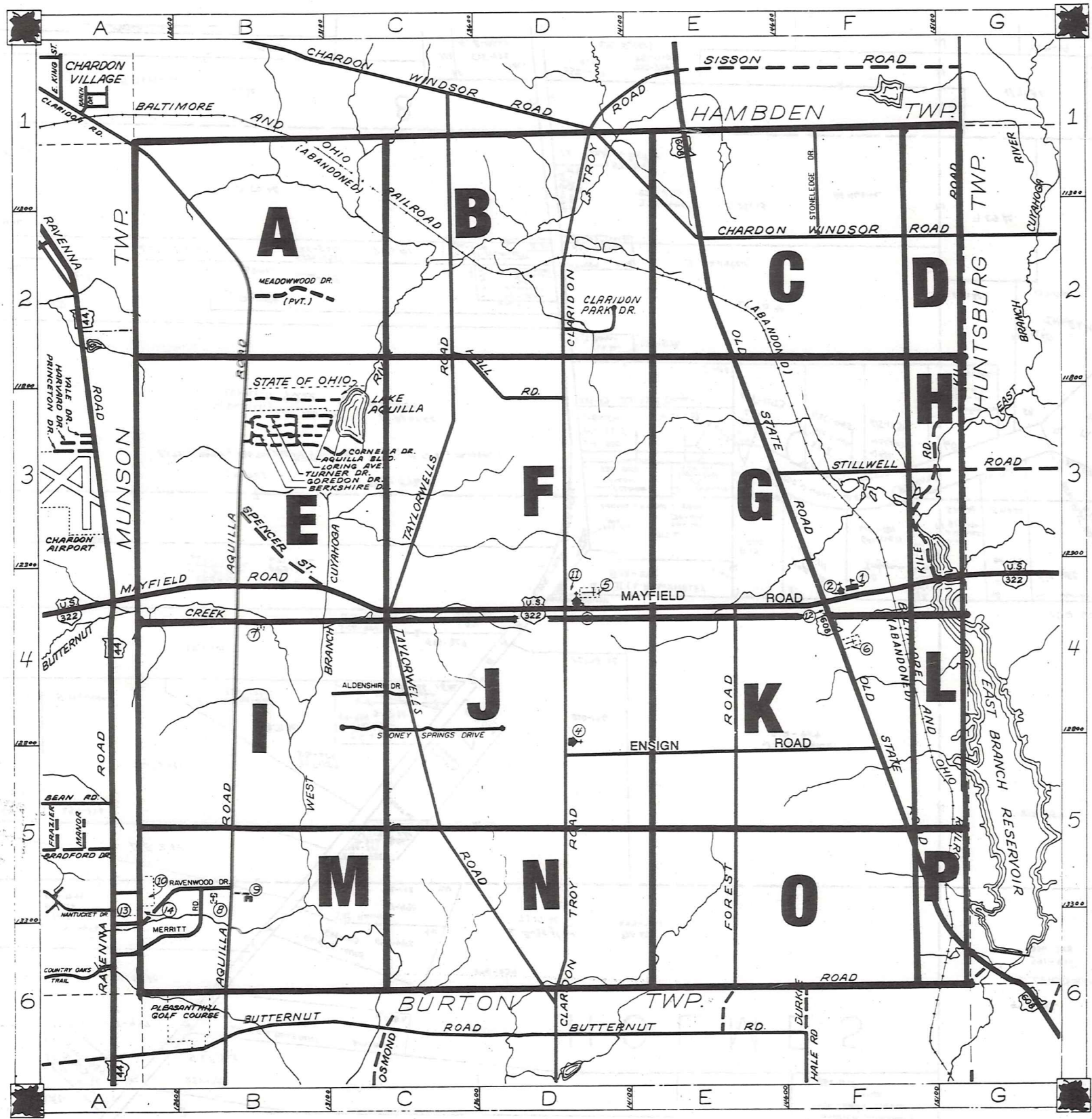


# ROAD INDEX

<b>A</b>	ALDENSHIRE DR. C4	<b>I</b> cont	<b>S</b>	SPENCER ST. B3-B4
	AQUILLA BLVD. C3			STILLWELL RD. F3-G3
	AQUILLA RD. A1-B6	<b>J</b>		STONELEDGE DR. F1-F2
				STONEY SPRINGS DR. C4
<b>B</b>	BERKSHIRE DR. B3	<b>K</b>	<b>T</b>	TAYLORWELLS RD. C1-D6
		KILE RD. F4-G1		TURNER DR. B3
<b>C</b>	CHARDON WINDSOR RD. D1-G2		<b>U</b>	
	CLARIDON PARK DR. D2	LORING AVE. B3		
	CLARIDON TROY RD. D1-D6		<b>V</b>	
	CORNELIA DR. B3			
<b>D</b>	DURKEE RD. F6-G6	<b>M</b>	<b>W</b>	
		MAYFIELD RD. A4-G4		
		MEADOWWOOD DR. B2		
		MERRITT RD. A6-B5		
<b>E</b>	ENSIGN RD. D5-F5	<b>N</b>	<b>X</b>	
<b>F</b>	FOREST RD. E4-E6	<b>O</b>	<b>Y</b>	
		OLD STATE RD. E1-G6		
<b>G</b>	GOREDON DR. B3	<b>P</b>	<b>Z</b>	
<b>H</b>	HALL RD. C2-D3	<b>Q</b>		
		<b>R</b>		
		RAVENWOOD DR. A5-B5		



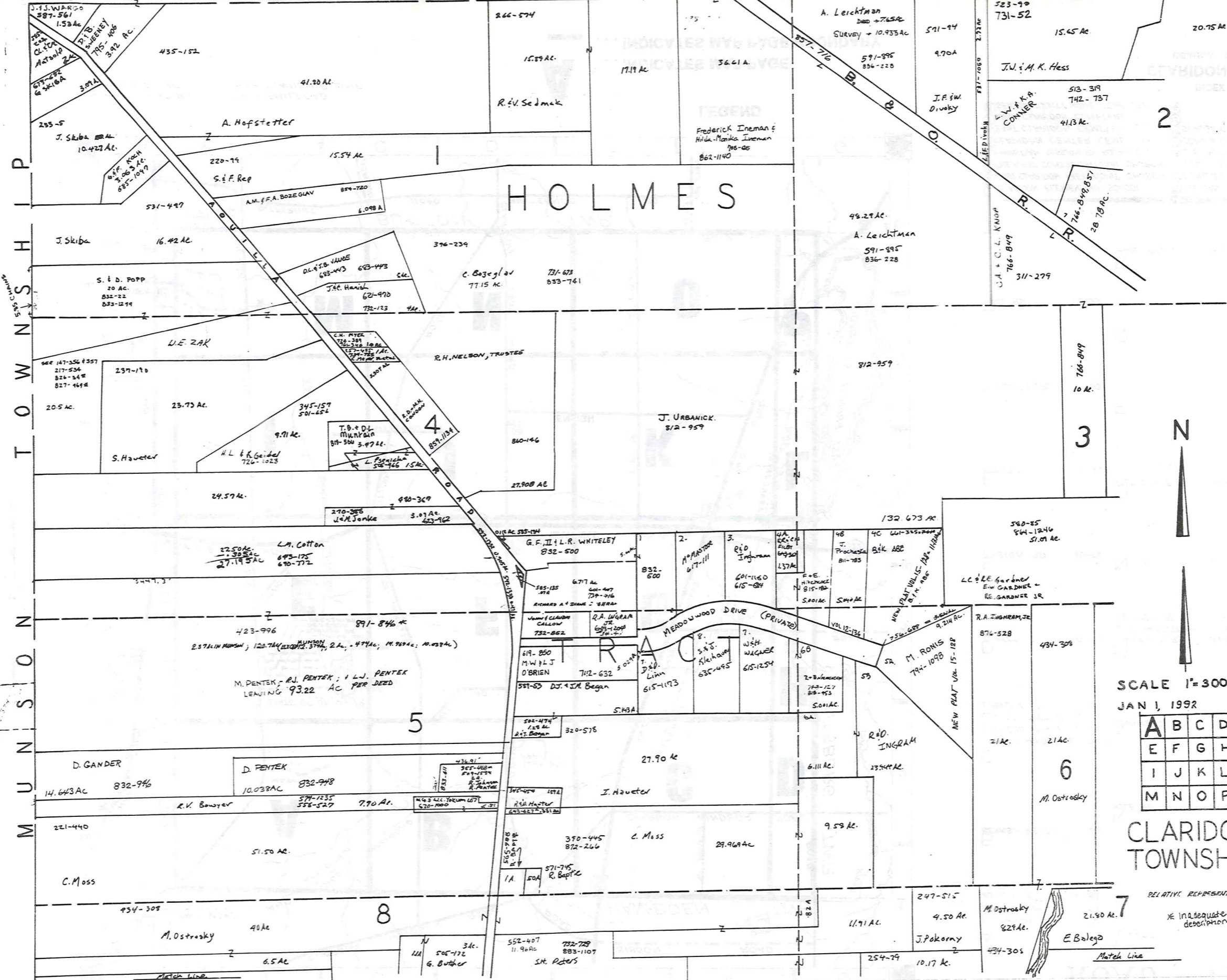
- - - UNPAVED ROAD      - - - RAILROAD  
 = = = PAVED ROAD      - - - TOWNSHIP LINE

## LEGEND

**A** ... INDICATES MAP PAGE  
**-** ... INDICATES MAP PAGE BOUNDARY

- ① CLARIDON ELEMENTARY SCHOOL
- ② EAST CLARIDON METHODIST CHURCH
- ③ THE FIRST CONGREGATIONAL CHURCH
- ④ CHRISTIAN MISSIONARY ALLIANCE CH.
- ⑤ CLARIDON CENTER CEMETERY
- ⑥ EAST CLARIDON CEMETERY
- ⑦ WEST CLARIDON CEMETERY
- ⑧ GEAGA COUNTY HOME CEMETERY
- ⑨ PLEASANT HILL COUNTY HOME
- ⑩ GEAGA COUNTY COMM. HOSPITAL
- ⑪ CLARIDON TOWN HALL
- ⑫ U.S. POST OFFICE (CLARIDON)
- ⑬ GEAGA COUNTY SAFETY CENTER
- ⑭ GEAGA COUNTY WELFARE DEPT.
- ⑮
- ⑯

INDEX MAP OF  
**CLARIDON TOWNSHIP**  
 GEAGA COUNTY, OHIO



H O L M E S

2

3

5

6

8

7

SCALE 1"=300'  
JAN 1, 1992

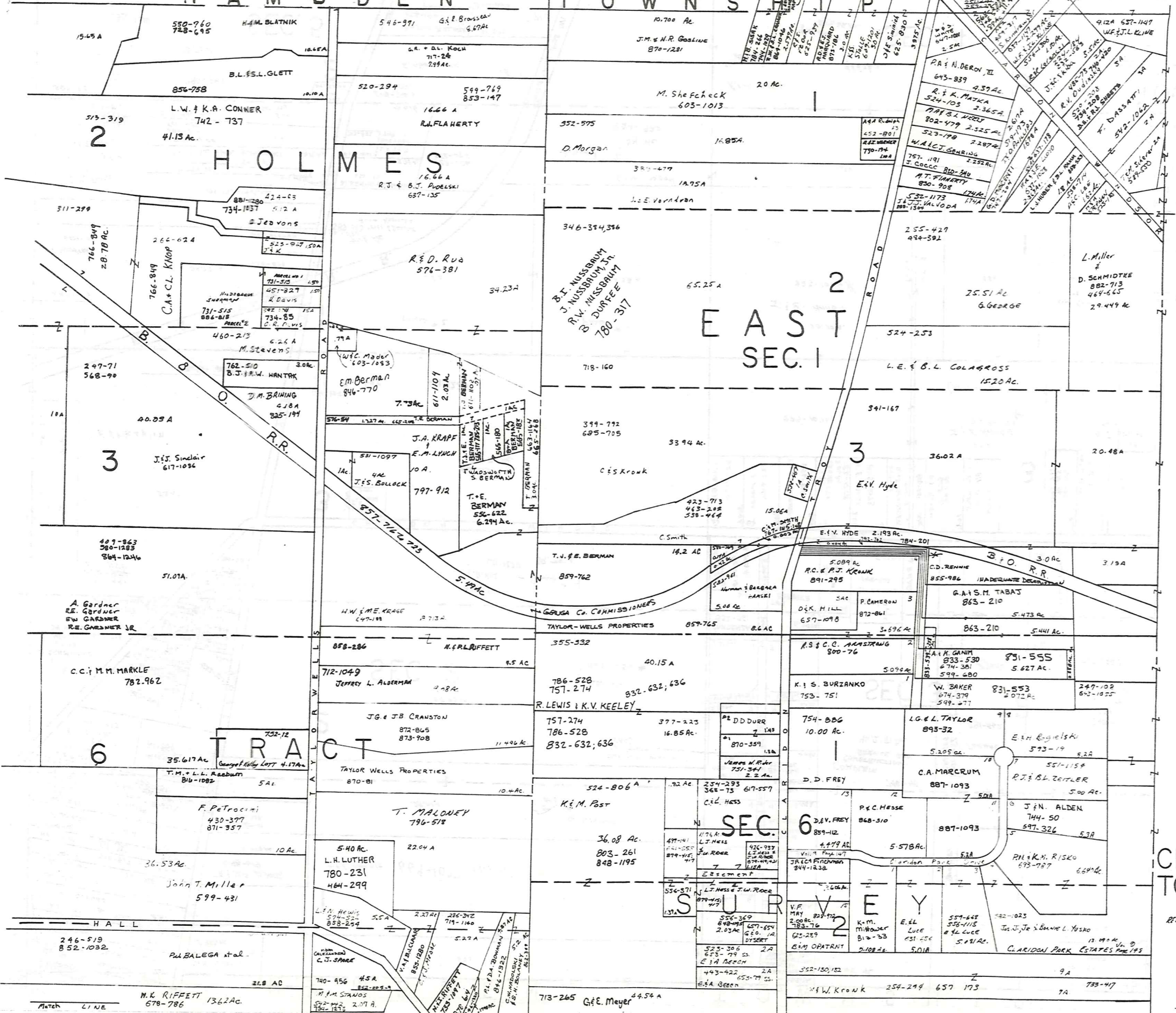
A	B	C	D
E	F	G	H
I	J	K	L
M	N	O	P

CLARIDON TOWNSHIP

RELATIVE REPRESENTATION  
\* Inadequate description

Match Line

H A M B D E N T O W N S H I P

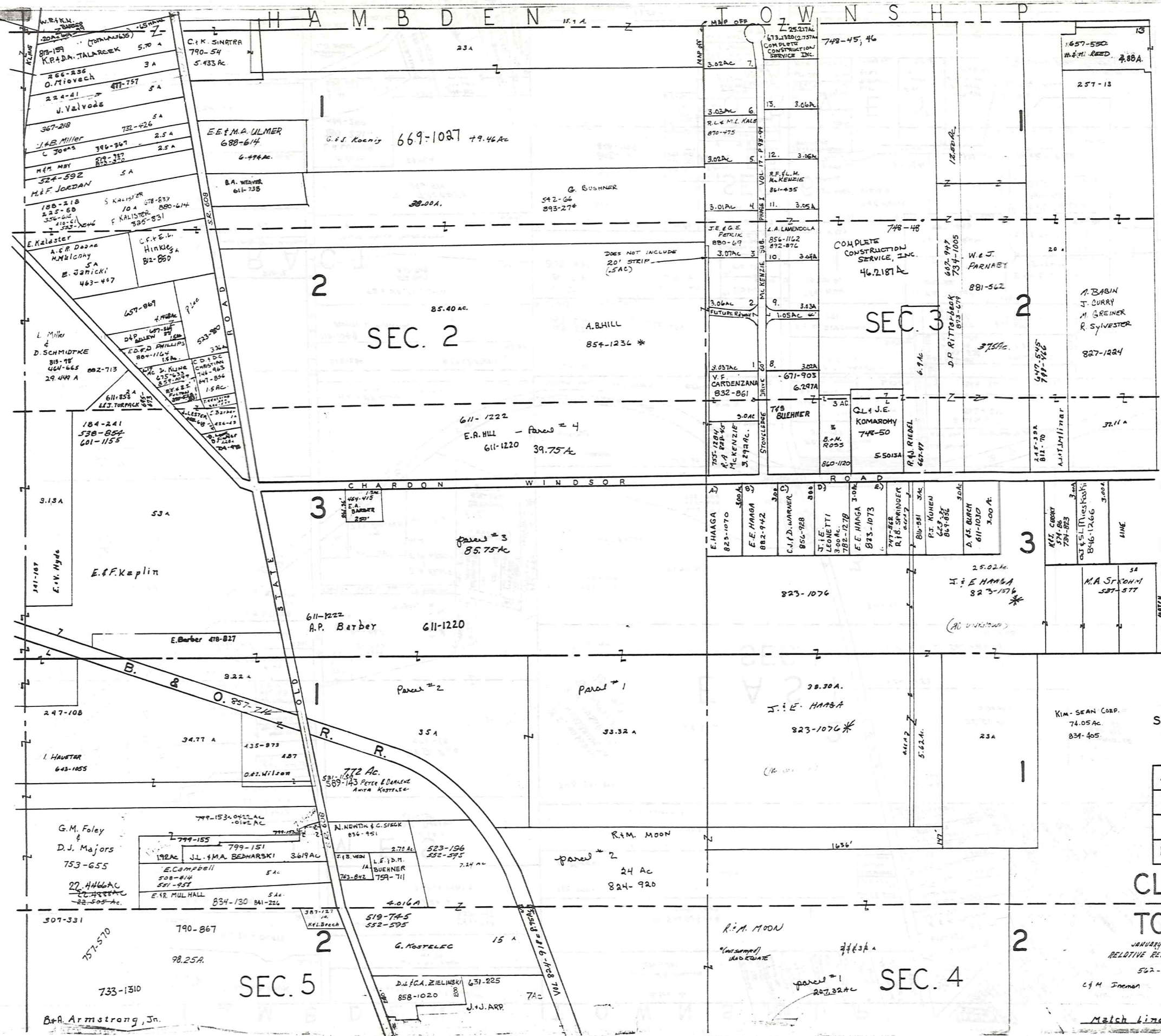


SCALE 1" = 300'  
JAN 1, 1992

A	B	C	D
E	F	G	H
I	J	K	L
M	N	O	P

CLARIDON TOWNSHIP

RELATIVE REPRESENTATION  
\* Inadequate description



LOWEST BIDDER

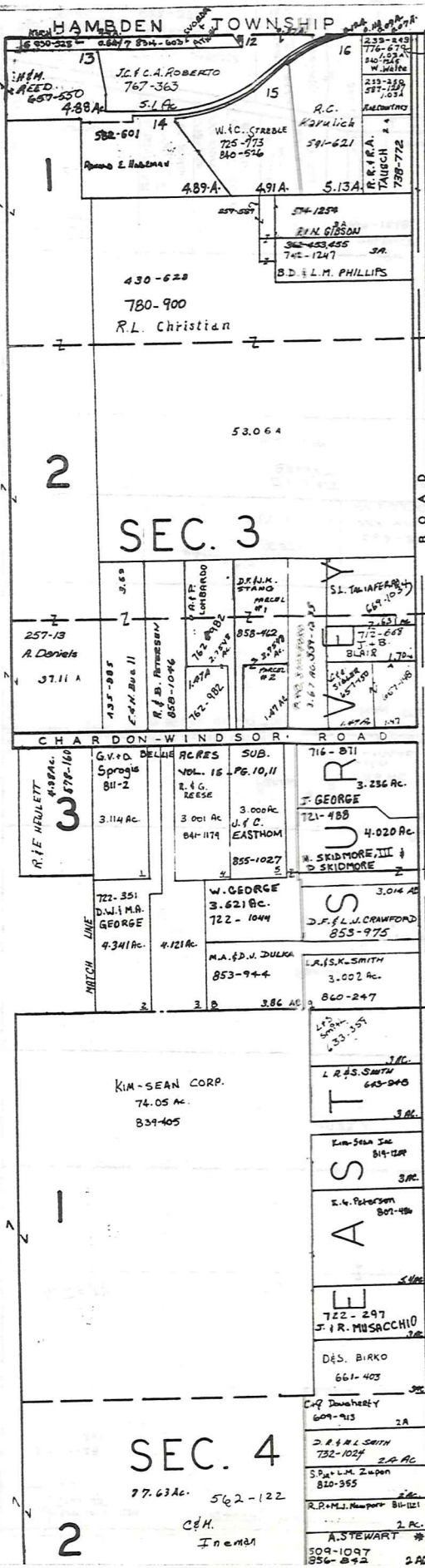


SCALE 1" = 300'

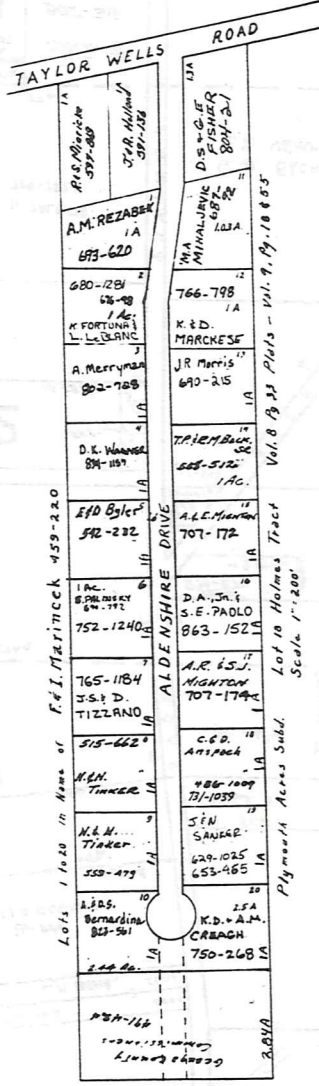
A	B	C	D
E	F	G	H
I	J	K	L
M	N	O	P

# CLARIDON TOWNSHIP

JANUARY 1, 1992  
 RELATIVE REPRESENTATION  
 562-127  
 C/M Freeman \* Inadequate description  
 Match Line

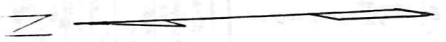


H A M D E N T O W N S H I P



T A Y L O R W E L L S R O A D

H U N T S B U R G T O W N S H I P



SCALE 1"=300'

\* Inadequate description

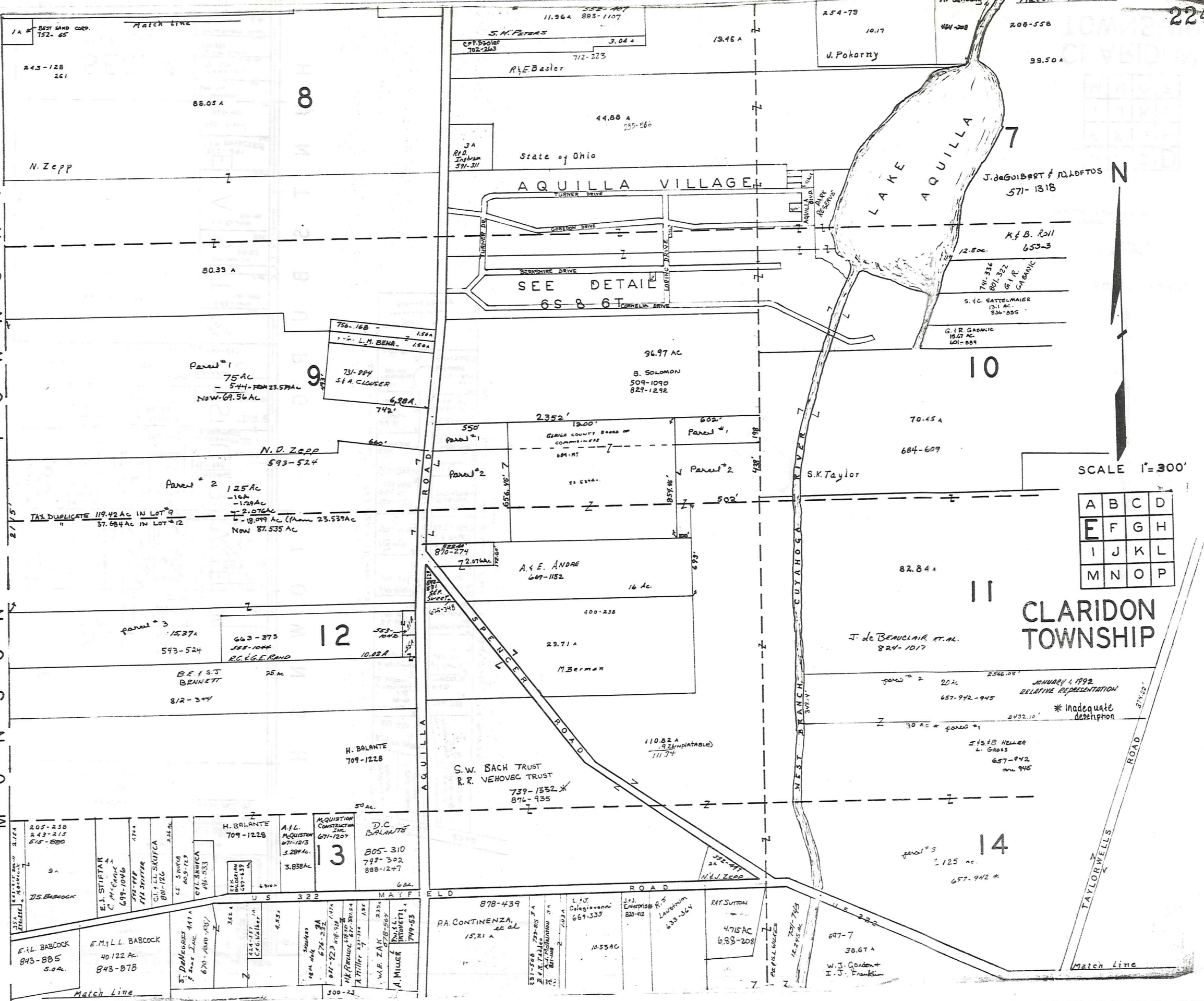
JANUARY 1, 1992  
RELATIVE REPRESENTATION

A	B	C	D
E	F	G	H
I	J	K	L
M	N	O	P

CLARIDON TOWNSHIP 223

M U N I C I P A L I T Y O F C L A R I D O N T O W N S H I P

224



SEE DETAIL  
6S 8 6T

A	B	C	D
E	F	G	H
I	J	K	L
M	N	O	P

# CLARIDON TOWNSHIP

JANUARY 1, 1992  
RELATIVE REPRESENTATION  
\* inadequate description

1A BEST SAND CORP.  
152-65

S.H. PETERS  
11.96A 883-1107  
3.04A  
712-223

254-78  
10.17  
J. Pokorny

N. Zepp

State of Ohio

AQUILLA VILLAGE

LAKE AQUILLA

J. de Goibert & D. Loftos  
571-1318

K.B. Roll  
653-3

S. G. SATTELMAYER  
13.1 AC.  
530-255

G. R. GABANE  
15.07 AC.  
601-889

Parcel #1  
75 AC  
- 5.44 FROM 23.57 AC  
Now 69.56 AC

731-894  
S.F.A. CLOUSER

96.97 AC  
B. SOLOMON  
509-1090  
827-1292

Parcel #2  
125 AC  
- 16A  
- 1.29 AC  
- 2.076 AC  
- 18.099 AC (from 23.539 AC)  
Now 87.535 AC

N. D. Zepp  
593-524

A. E. ANDRE  
669-1152

J. de BEAUCLAIR et al.  
824-1017

Parcel #3  
15.37A  
593-524

663-373  
588-1004  
R.C. EG. RAND

S.W. BACH TRUST  
R.R. VEHOVEC TRUST  
739-1352  
876-935

J. H. B. HELLER  
L. Gross  
657-942  
m. 945

H. BALANTE  
709-1228

D.C. BALANTE  
805-310  
717-302  
888-1247

Parcel #3  
125 AC  
657-942

205-238  
243-215  
575-880

E.J. STIFTER  
C. M. CHASE  
699-1096

M. SPITZER  
788-788

H. BALANTE  
709-1228

A.L. McQUISTON  
671-1215  
3.289 AC

F.L. BABCOCK  
843-885  
S.O.R.

E.M. L. BABCOCK  
40.122 AC  
843-878

J. DeLoe  
3.00 AC  
620-1000-1037

3.82 AC

PA. CONTINAZZA  
15.21 A

878-439

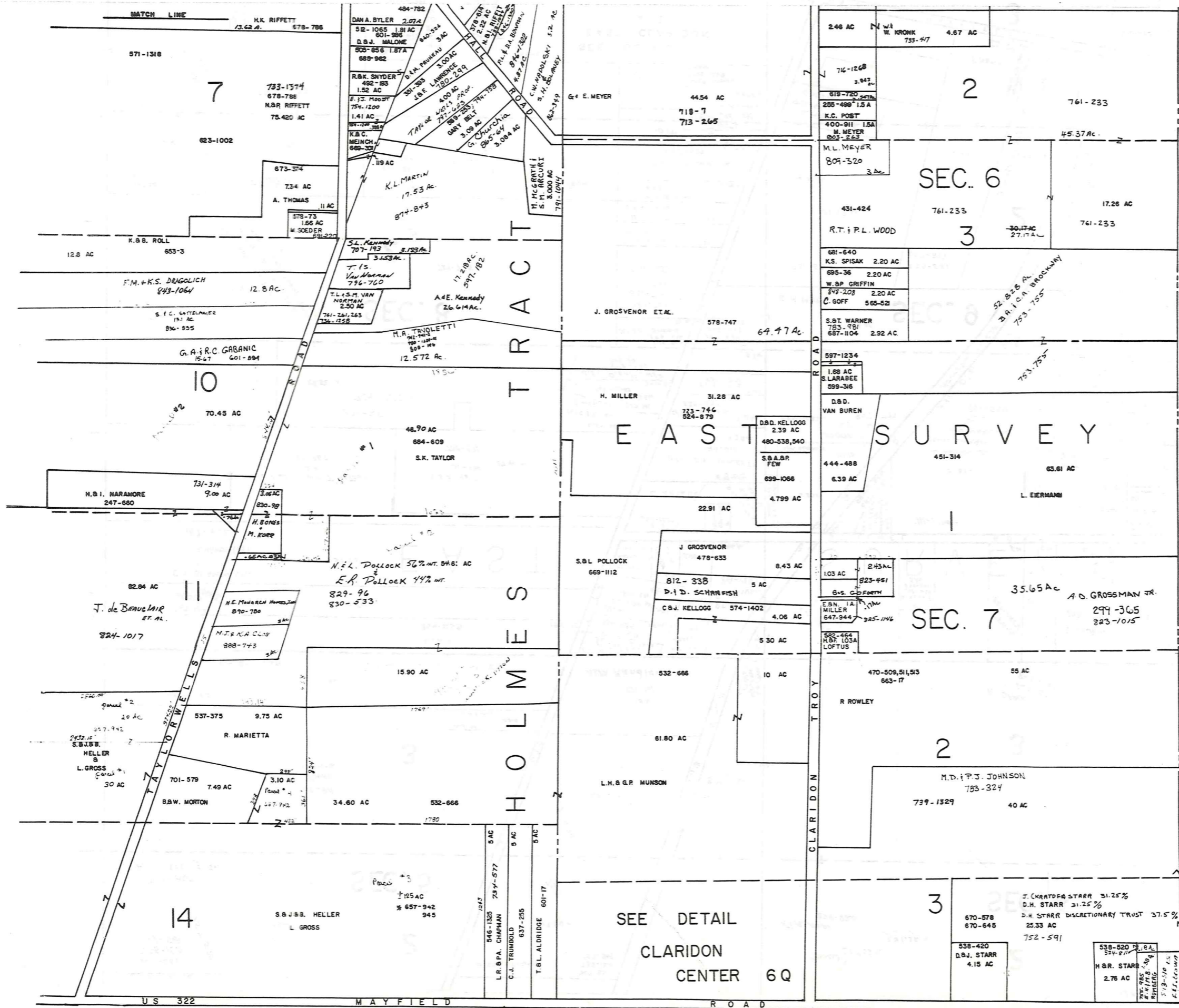
L. F. Colagiovanni  
669-335

J. J. ENGLISH  
820-412

4.715 AC  
688-208

697-7  
38.67 A

W. J. Condon  
I. U. Franklin



SCALE: 1" = 300'

A	B	C	D
E	F	G	H
I	J	K	L
M	N	O	P

CLARIDON  
TOWNSHIP

J. JUDY, 1992  
RELATIVE REPRESENTATION

\* Inadequate description

Match Line  
307-331  
753-1510  
757-569  
757-570

Match Line

SEC. 5

SEC. 4

3

3

EAST

SURVEY



SCALE 1" = 300'

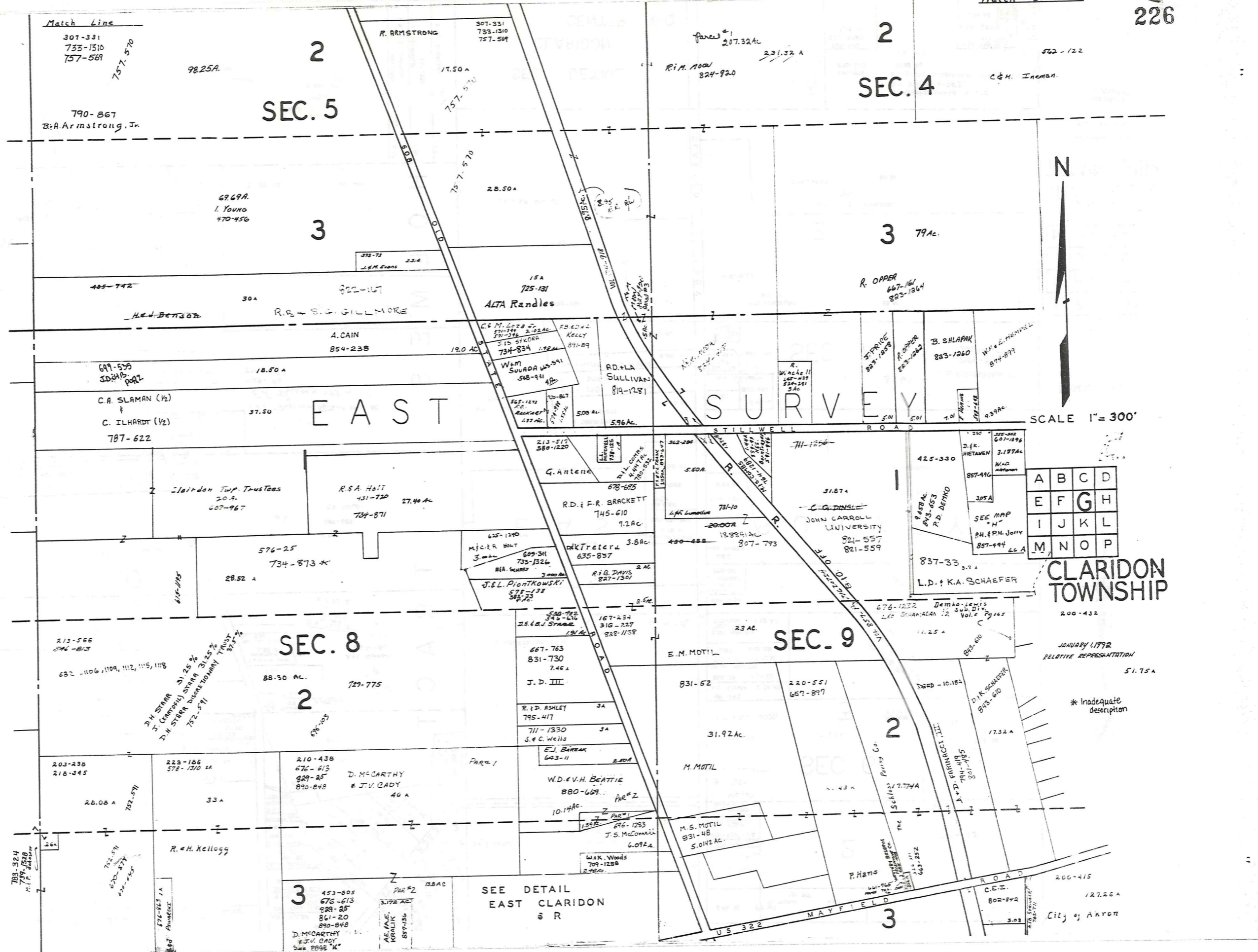
A	B	C	D
E	F	G	H
I	J	K	L
M	N	O	P

CLARIDON TOWNSHIP

JANUARY 1892  
RELATIVE REPRESENTATION

\* Inadequate description

SEE DETAIL  
EAST CLARIDON  
& R



790-867  
B.A. Armstrong, Jr.

98.25A

R. ARMSTRONG  
307-331  
753-1510  
757-569

Panel #1  
207.32A  
R.M. MOON  
824-920  
231.32 A

562-122  
C.H. INEMAN

69.69A  
I. YOUNG  
470-456

28.50A

373-72  
J.M. Evans  
23.4

15A  
725-131  
ALTA Randles

R. OPPER  
667-161  
823-1364

405-742

30A

822-167  
H.E. BENSON  
R.B. & S.G. GILLMORE

CS.M. 2078  
531-396  
515 STOKER  
734-834  
W.M. SUVADA  
665-591  
568-941

R.D. & L.A. SULLIVAN  
819-1281

R. W. HAZEL  
140-422  
514-281  
3AC

B. SHLAPAK  
823-1260

W.A. & E. HENNEL  
874-899

699-555  
J.D. & B. PAZ

18.50A

C.A. SLAMAN (1/2)  
C. ILHARDT (1/2)  
787-622

37.50

5.96A  
500 AC

STILLWELL ROAD

5.01  
5.01  
7.01  
9.39A

Walden Twp. Trustees  
20A  
607-967

R.S.A. HOLT  
431-720  
734-871  
27.40 AC

G. Antene  
678-675  
RD. & F.R. BRACKETT  
745-610  
7.2 AC

C. G. DINSLE  
JOHN CARROLL UNIVERSITY  
821-557  
821-559

425-330  
D.K. HIETAMEN  
3.187 AC  
857-496  
305A  
SEE MAP  
P.H. & P.M. JOLLY  
857-494  
6.6A

9.658 AC  
813-653  
P.D. DENNO

837-33  
L.D. & K.A. SCHAEFER

576-25  
734-873 \*  
28.52 A

625-1240  
M.J. & R. HOLT  
609-341  
733-1326  
R.I.A. SCHWARTZ  
3000 AC

635-837  
D.K. TREIER  
3.8 AC  
635-837  
R.I. & Q. DAVIS  
827-1301  
2 AC

362-201  
S.50A  
445 LUMBER  
731-10  
2000R  
430-488  
13.894 AC  
307-793

676-1232  
Demko-Lewis  
LEE SHANAHAN JR  
Vol. 2 Page 165  
11.25 A

213-566  
746-813  
682-1106, 1109, 1112, 1115, 1118

SEC. 8

2

D.H. STARR  
31.25 %  
D. CARROLL STARR  
31.25 %  
D.H. STARR DUKE TOWNSHIP TRUST  
31.25 %  
752-571

88.30 AC  
729-775

550-442  
340-616  
J.S. & B. STARR  
19.4 AC

667-763  
831-730  
7.46 A  
J.D. III

E.M. MOTIL  
831-52

SEC. 9

2

220-551  
657-897

2600-10.184  
D.K. SCHAEFER  
813-610

203-238  
218-345  
26.08 A

223-186  
578-170  
33A

210-438  
676-613  
629-25  
890-848  
D. MCCARTHY  
& J.V. CADDY  
40 A

711-1330  
J.C. WELLS  
3A

E.J. BARZAK  
623-11  
2.50A

M. MOTIL  
31.92 AC

W.D. & V.H. BEATTIE  
880-669  
10.14 AC

M.S. MOTIL  
831-48  
5.042 AC

581-101  
194-41  
C.D. & T. C. D. LANE  
7.774A

789-924  
789-155  
M.P. JOLLY

752-571  
620-874  
823-245

R. & H. KELLOGG

453-805  
676-613  
629-25  
861-20  
890-848  
D. MCCARTHY  
& J.V. CADDY  
SEE PAGE 6

SEE DETAIL  
EAST CLARIDON  
& R

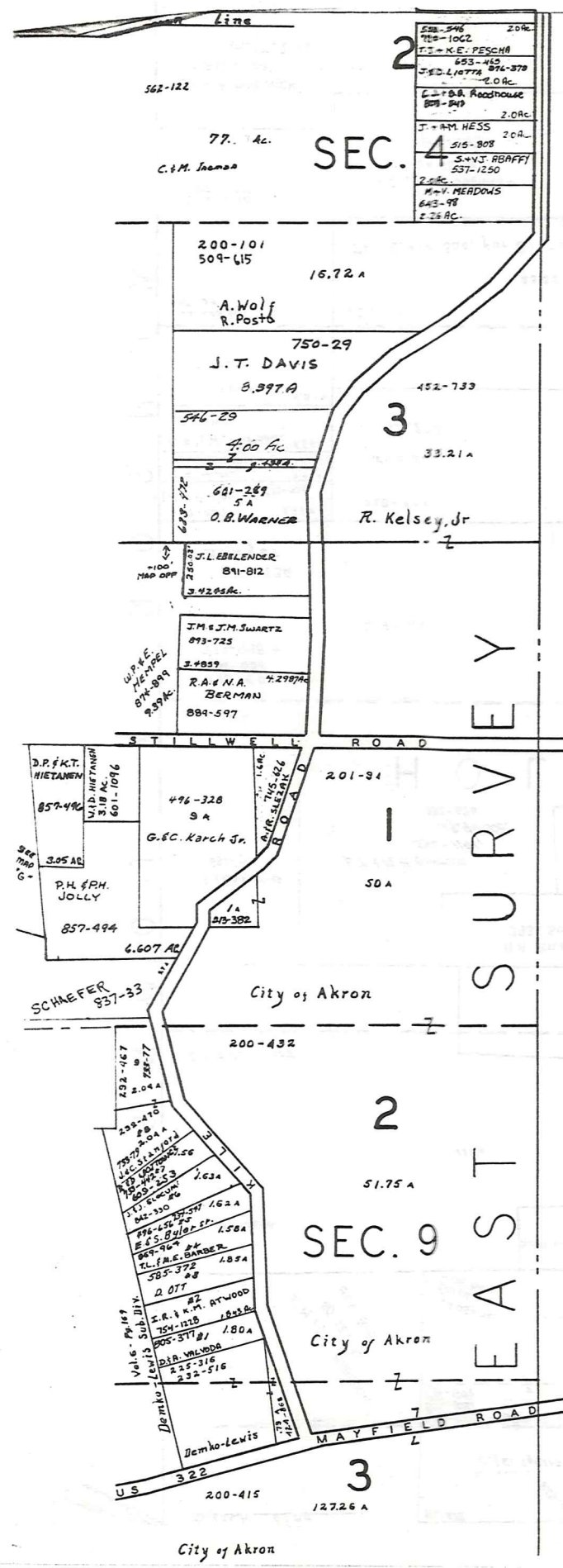
W.K. WOODS  
709-1288  
2.26 AC

P. HANS

661-765  
661-765  
663-242

200-415  
C.E. J.  
802-892

127.26A  
City of Akron



EAST HUNT SUBURG TOWNSHIP



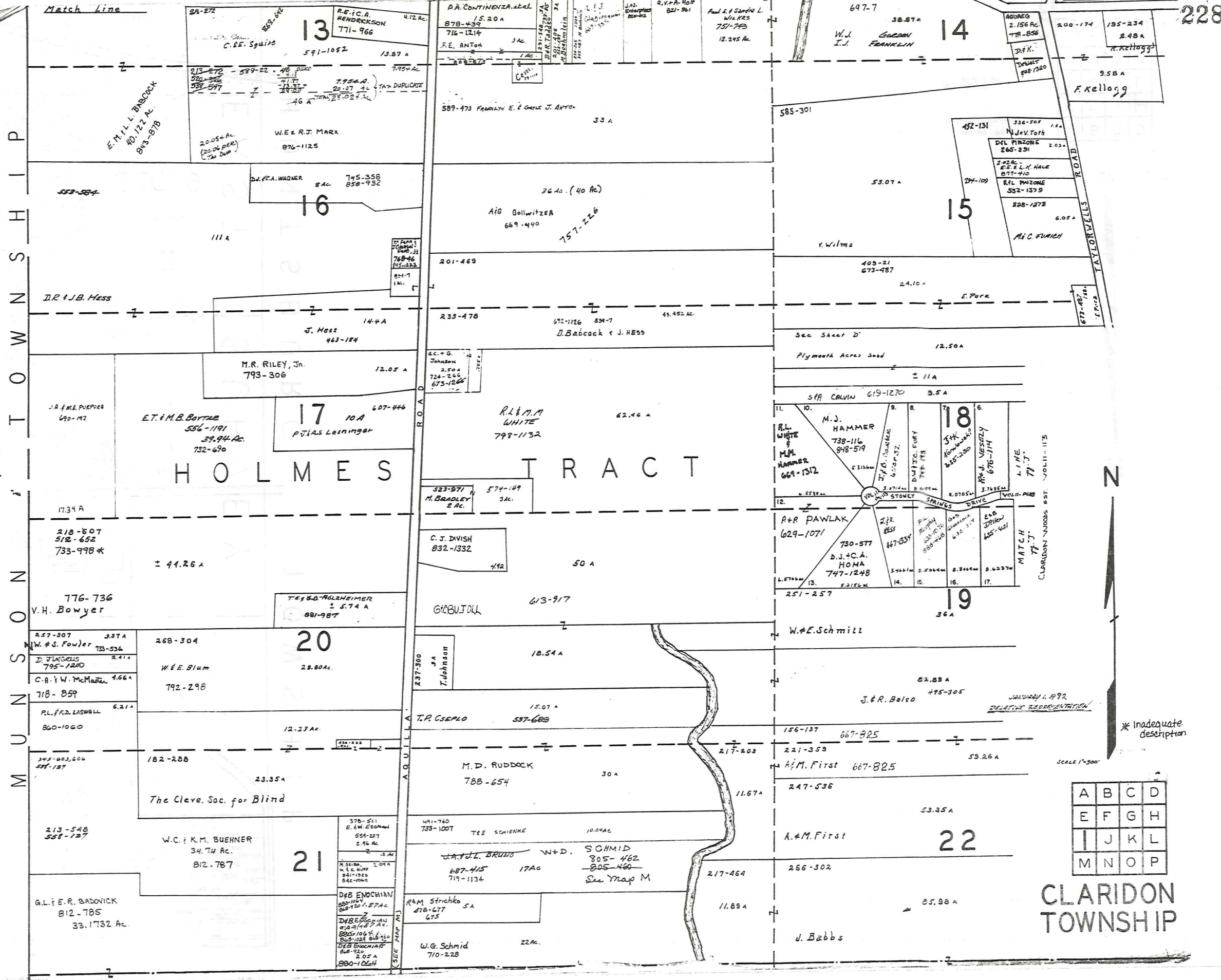
SCALE 1"=300'

JANUARY 1892  
RELATIVE REPRESENTATION

\* Inadequate description

A	B	C	D
E	F	G	H
I	J	K	L
M	N	O	P

CLARIDON TOWNSHIP



MUNICIPALITY

H O L M E S T R A C T

CLARIDON TOWNSHIP

A	B	C	D
E	F	G	H
I	J	K	L
M	N	O	P

\* Inadequate description

SCALE 1"=300'

JANUARY 1, 1972  
RELATIVE REPRESENTATION

N

228

Match Line

Match Line

13

14

16

15

17

18

20

19

21

22

E. M. L. L. BIRKBECK  
400-122 Ac.  
843-878

D.R. & J.B. Hess

J.A. & M.E. PURPORA  
690-192

218-507  
512-652  
733-998\*

776-736  
V.H. Bowyer

257-307  
W.S. Fowler  
733-534

D. FURCUES  
795-1200

C.B. & W. McMAHER  
718-859

P.L. F.D. LASWELL  
860-1060

345-603,606  
557-157

213-548  
558-127

G.L. & E.R. BABOVICK  
812-785  
33.1732 Ac.

E.T. & M.B. BOYNE  
556-1191  
39.94 Ac.  
732-690

W.E. R.T. MARK  
876-1125

D.F. & C.A. WAGNER  
84c 745-358  
858-952

J. Hess  
463-184

M.R. RILEY, Jr.  
793-306

M. BRADLEY  
2 Ac.

TEF & D. ROZNEIMER  
± 5.74 A  
891-987

268-304  
W.E. BIRUM  
792-298

182-288  
23.35 A  
The Cleve. Soc. for Blind

W.C. & K.M. BUEHNER  
34.74 Ac.  
812-787

578-511  
E. & W. ERODANI  
554-227  
2.46 Ac

D&B ENOCHIAN  
800-106 Ac.  
800-106 Ac.  
800-106 Ac.  
800-106 Ac.  
800-106 Ac.  
800-106 Ac.  
800-106 Ac.  
800-106 Ac.

R.E. I.C.A. HENDRICKSON  
771-966

589-473 FRANKLIN E. & GALE J. ANTON

36 Ac. (40 Ac)  
AIG GOLLWITZER  
669-440

201-469

233-478  
672-1126 834-7  
45.452 Ac.  
D. Babcock & J. HESS

G.C. & G. JOHNSON  
2.50 A  
724-246  
675-1264

R.L. & M.M. WHITE  
798-1132

574-149  
3Ac.

C.J. DIVISH  
832-1332

GIBBULL  
613-917

237-300  
J.A. JOHNSON

T.R. CSEPLO  
537-603

M.D. RUDDOCK  
788-654

441-740  
733-1007  
TEE SCHIENKE  
10.04 AC

J.A. & J.L. BRUNO  
687-415  
719-1134

R&M Strichko SA  
878-677  
675

W.G. Schmid  
710-228

P.A. CONTINENZA et al  
15.20 A  
878-439  
716-1214  
JAC

589-473 FRANKLIN E. & GALE J. ANTON

36 Ac. (40 Ac)  
AIG GOLLWITZER  
669-440

201-469

233-478  
672-1126 834-7  
45.452 Ac.  
D. Babcock & J. HESS

G.C. & G. JOHNSON  
2.50 A  
724-246  
675-1264

R.L. & M.M. WHITE  
798-1132

574-149  
3Ac.

C.J. DIVISH  
832-1332

GIBBULL  
613-917

237-300  
J.A. JOHNSON

T.R. CSEPLO  
537-603

M.D. RUDDOCK  
788-654

441-740  
733-1007  
TEE SCHIENKE  
10.04 AC

J.A. & J.L. BRUNO  
687-415  
719-1134

R&M Strichko SA  
878-677  
675

W.G. Schmid  
710-228

589-473 FRANKLIN E. & GALE J. ANTON

36 Ac. (40 Ac)  
AIG GOLLWITZER  
669-440

36 Ac. (40 Ac)  
AIG GOLLWITZER  
669-440

201-469

233-478  
672-1126 834-7  
45.452 Ac.  
D. Babcock & J. HESS

G.C. & G. JOHNSON  
2.50 A  
724-246  
675-1264

R.L. & M.M. WHITE  
798-1132

574-149  
3Ac.

C.J. DIVISH  
832-1332

GIBBULL  
613-917

237-300  
J.A. JOHNSON

T.R. CSEPLO  
537-603

M.D. RUDDOCK  
788-654

441-740  
733-1007  
TEE SCHIENKE  
10.04 AC

J.A. & J.L. BRUNO  
687-415  
719-1134

R&M Strichko SA  
878-677  
675

W.G. Schmid  
710-228

589-473 FRANKLIN E. & GALE J. ANTON

36 Ac. (40 Ac)  
AIG GOLLWITZER  
669-440

36 Ac. (40 Ac)  
AIG GOLLWITZER  
669-440

201-469

233-478  
672-1126 834-7  
45.452 Ac.  
D. Babcock & J. HESS

G.C. & G. JOHNSON  
2.50 A  
724-246  
675-1264

R.L. & M.M. WHITE  
798-1132

574-149  
3Ac.

C.J. DIVISH  
832-1332

GIBBULL  
613-917

237-300  
J.A. JOHNSON

T.R. CSEPLO  
537-603

M.D. RUDDOCK  
788-654

441-740  
733-1007  
TEE SCHIENKE  
10.04 AC

J.A. & J.L. BRUNO  
687-415  
719-1134

R&M Strichko SA  
878-677  
675

W.G. Schmid  
710-228

589-473 FRANKLIN E. & GALE J. ANTON

36 Ac. (40 Ac)  
AIG GOLLWITZER  
669-440

36 Ac. (40 Ac)  
AIG GOLLWITZER  
669-440

201-469

233-478  
672-1126 834-7  
45.452 Ac.  
D. Babcock & J. HESS

G.C. & G. JOHNSON  
2.50 A  
724-246  
675-1264

R.L. & M.M. WHITE  
798-1132

574-149  
3Ac.

C.J. DIVISH  
832-1332

GIBBULL  
613-917

237-300  
J.A. JOHNSON

T.R. CSEPLO  
537-603

M.D. RUDDOCK  
788-654

441-740  
733-1007  
TEE SCHIENKE  
10.04 AC

J.A. & J.L. BRUNO  
687-415  
719-1134

R&M Strichko SA  
878-677  
675

W.G. Schmid  
710-228

589-473 FRANKLIN E. & GALE J. ANTON

36 Ac. (40 Ac)  
AIG GOLLWITZER  
669-440

36 Ac. (40 Ac)  
AIG GOLLWITZER  
669-440

201-469

233-478  
672-1126 834-7  
45.452 Ac.  
D. Babcock & J. HESS

G.C. & G. JOHNSON  
2.50 A  
724-246  
675-1264

R.L. & M.M. WHITE  
798-1132

574-149  
3Ac.

C.J. DIVISH  
832-1332

GIBBULL  
613-917

237-300  
J.A. JOHNSON

T.R. CSEPLO  
537-603

M.D. RUDDOCK  
788-654

441-740  
733-1007  
TEE SCHIENKE  
10.04 AC

J.A. & J.L. BRUNO  
687-415  
719-1134

R&M Strichko SA  
878-677  
675

W.G. Schmid  
710-228

589-473 FRANKLIN E. & GALE J. ANTON

36 Ac. (40 Ac)  
AIG GOLLWITZER  
669-440

36 Ac. (40 Ac)  
AIG GOLLWITZER  
669-440

201-469

233-478  
672-1126 834-7  
45.452 Ac.  
D. Babcock & J. HESS

G.C. & G. JOHNSON  
2.50 A  
724-246  
675-1264

R.L. & M.M. WHITE  
798-1132

574-149  
3Ac.

C.J. DIVISH  
832-1332

GIBBULL  
613-917

237-300  
J.A. JOHNSON

T.R. CSEPLO  
537-603

M.D. RUDDOCK  
788-654

441-740  
733-1007  
TEE SCHIENKE  
10.04 AC

J.A. & J.L. BRUNO  
687-415  
719-1134

R&M Strichko SA  
878-677  
675

W.G. Schmid  
710-228

589-473 FRANKLIN E. & GALE J. ANTON

36 Ac. (40 Ac)  
AIG GOLLWITZER  
669-440

36 Ac. (40 Ac)  
AIG GOLLWITZER  
669-440

201-469

233-478  
672-1126 834-7  
45.452 Ac.  
D. Babcock & J. HESS

G.C. & G. JOHNSON  
2.50 A  
724-246  
675-1264

R.L. & M.M. WHITE  
798-1132

574-149  
3Ac.

C.J. DIVISH  
832-1332

GIBBULL  
613-917

237-300  
J.A. JOHNSON

T.R. CSEPLO  
537-603

M.D. RUDDOCK  
788-654

441-740  
733-1007  
TEE SCHIENKE  
10.04 AC

J.A. & J.L. BRUNO  
687-415  
719-1134

R&M Strichko SA  
878-677  
675

W.G. Schmid  
710-228

589-473 FRANKLIN E. & GALE J. ANTON

36 Ac. (40 Ac)  
AIG GOLLWITZER  
669-440

36 Ac. (40 Ac)  
AIG GOLLWITZER  
669-440

201-469

233-478  
672-1126 834-7  
45.452 Ac.  
D. Babcock & J. HESS

G.C. & G. JOHNSON  
2.50 A  
724-246  
675-1264

R.L. & M.M. WHITE  
798-1132

574-149  
3Ac.

C.J. DIVISH  
832-1332

GIBBULL  
613-917

237-300  
J.A. JOHNSON

T.R. CSEPLO  
537-603

M.D. RUDDOCK  
788-654

441-740  
733-1007  
TEE SCHIENKE  
10.04 AC

J.A. & J.L. BRUNO  
687-415  
719-1134

R&M Strichko SA  
878-677  
675

W.G. Schmid  
710-228

589-473 FRANKLIN E. & GALE J. ANTON

36 Ac. (40 Ac)  
AIG GOLLWITZER  
669-440

36 Ac. (40 Ac)  
AIG GOLLWITZER  
669-440

201-469

233-478  
672-1126 834-7  
45.452 Ac.  
D. Babcock & J. HESS

G.C. & G. JOHNSON  
2.50 A  
724-246  
675-1264

R.L. & M.M. WHITE  
798-1132

574-149  
3Ac.

C.J. DIVISH  
832-1332

GIBBULL  
613-917

237-300  
J.A. JOHNSON

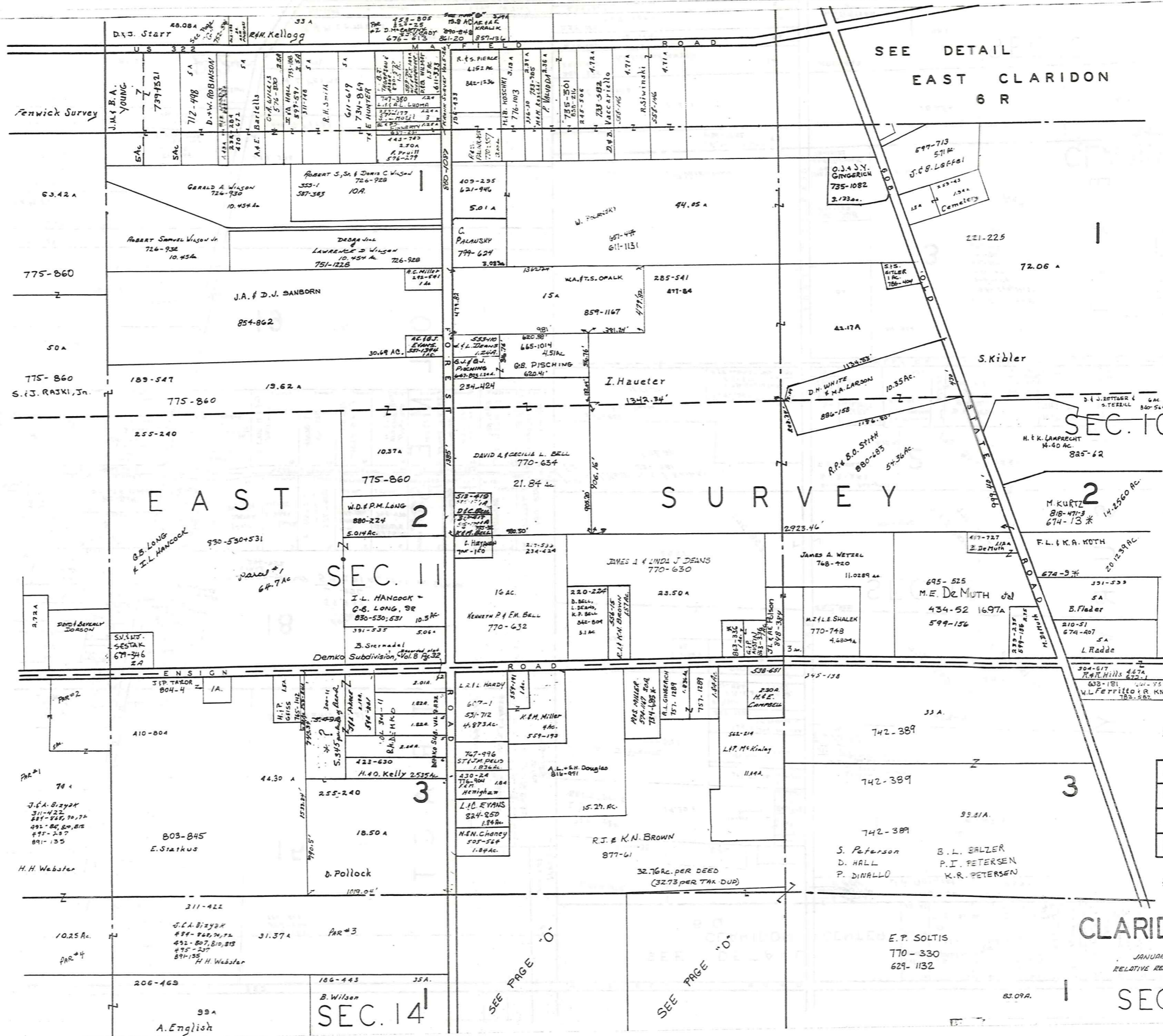
T.R. CSEPLO  
537-603

M.D. RUDDOCK  
788-654

441-740  
733-1007  
TEE SCHIENKE  
10.04 AC

J.A. & J.L. BRUNO  
687-41





SEE DETAIL  
EAST CLARIDON  
6 R

EAST

SURVEY

SEC. 11

SEC. 10

2

3

SEC. 14



SCALE 1"=300'

A	B	C	D
E	F	G	H
I	J	K	L
M	N	O	P

\* Inadequate description

CLARIDON TWP.

JANUARY 1, 1992  
RELATIVE REPRESENTATION

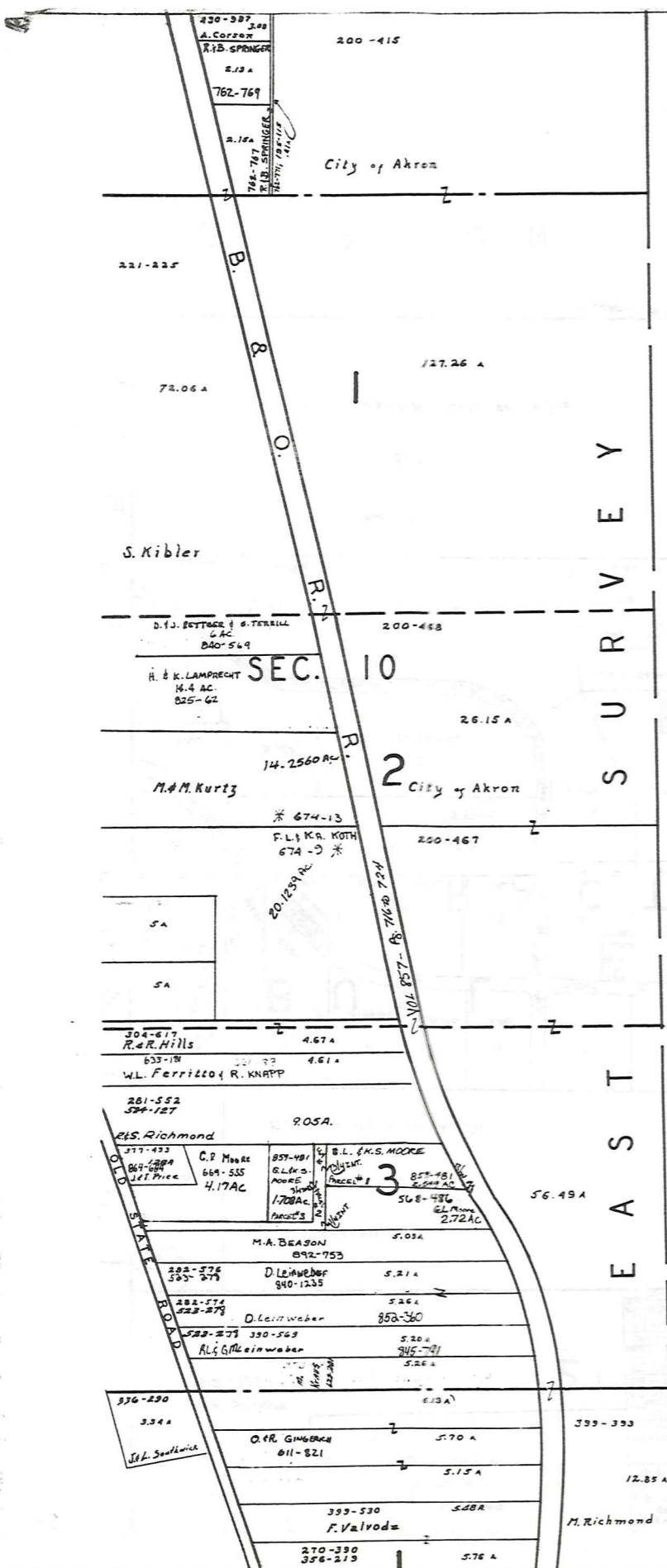
SEC. 15

SEE PAGE "0"

SEE PAGE "0"

E.P. SOLTIS  
770-330  
629-1132

83.09A.



HUNTSBURG TOWNSHIP  
 SURVEY



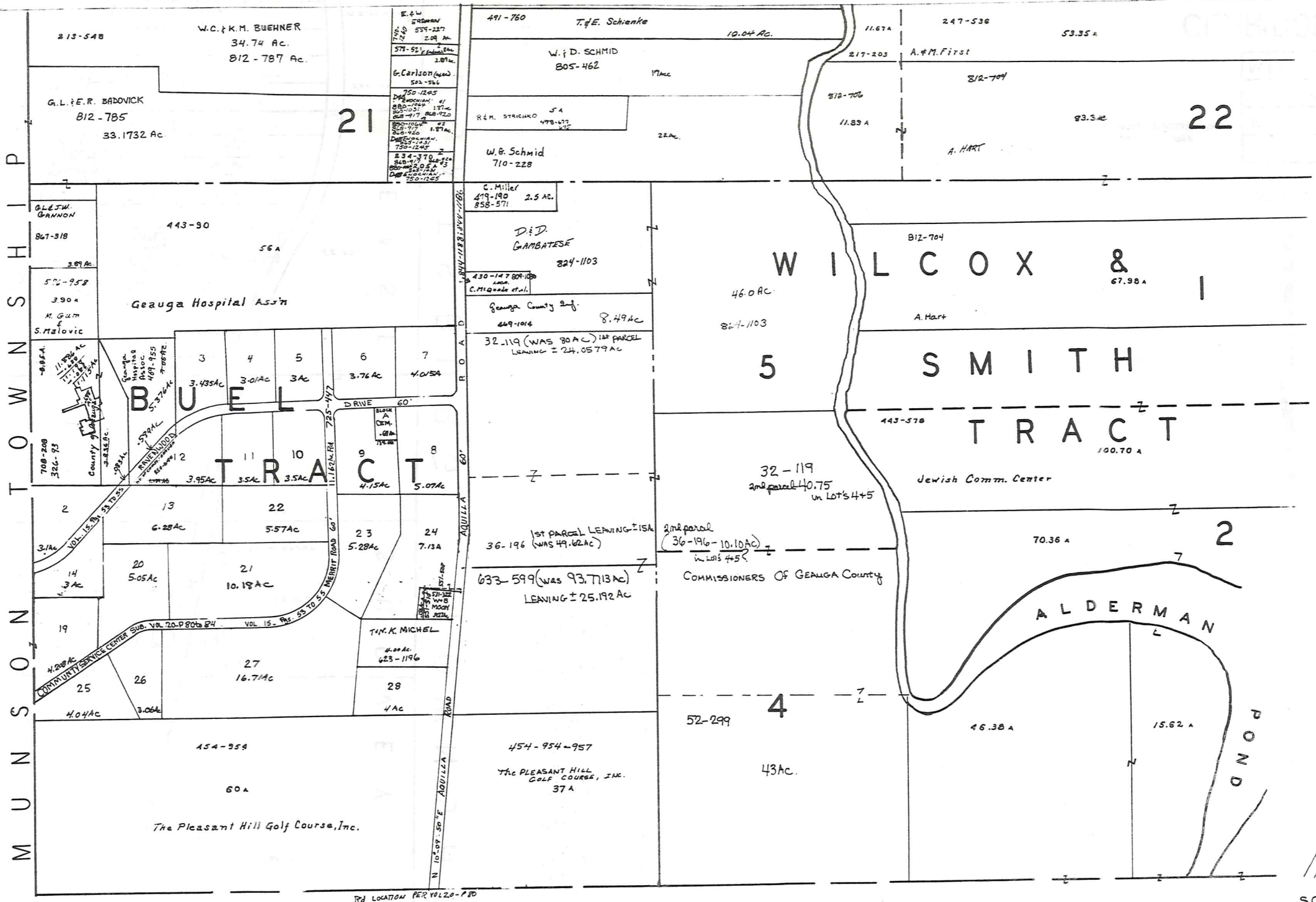
\* Inadequate description

SCALE 1" = 300'

JANUARY 1, 1992  
 RELATIVE REPRESENTATION

A	B	C	D
E	F	G	H
I	J	K	L
M	N	O	P

CLARIDON TWP.



BURTON TOWNSHIP

BURTON TOWNSHIP



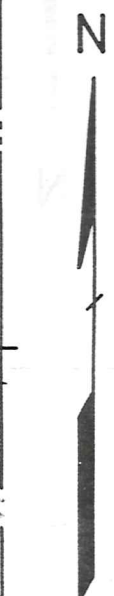
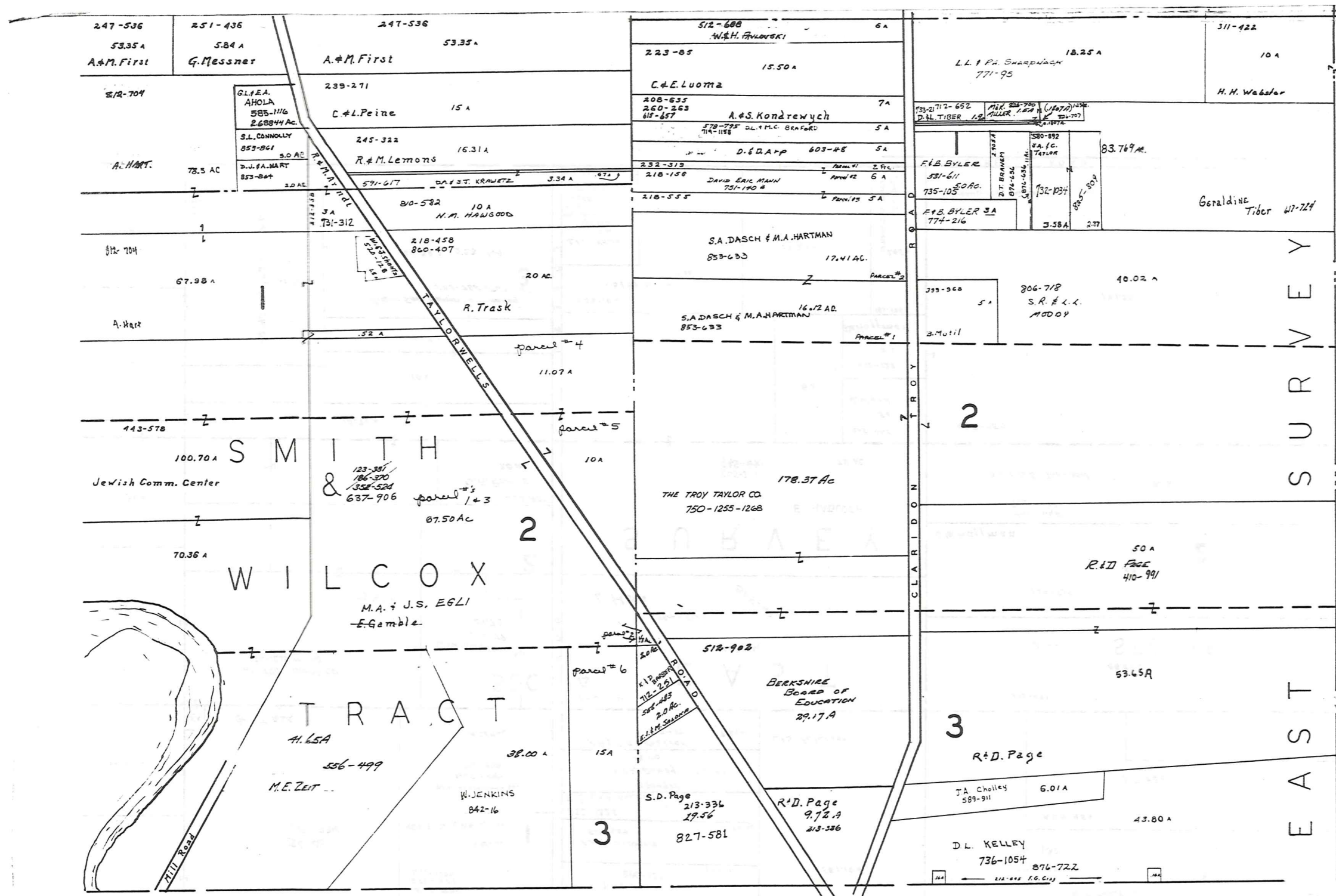
SCALE 1" = 300'

A	B	C	D
E	F	G	H
I	J	K	L
M	N	O	P

JANUARY 1, 1998  
RELATIVE REPRESENTATION

\* Inadequate description

CLARIDON TWP



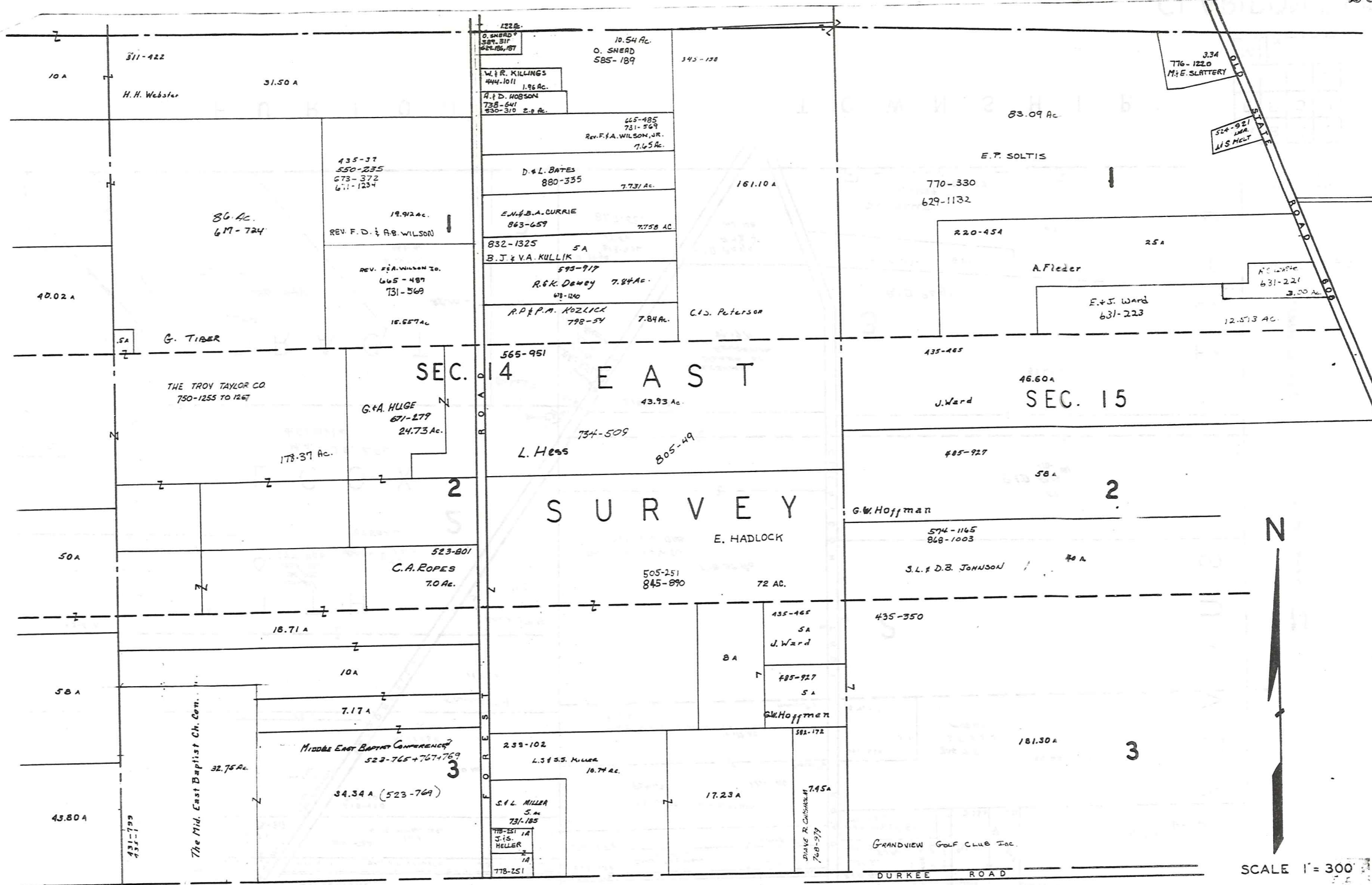
SCALE 1" = 300'

\* Inadequate description

A	B	C	D
E	F	G	H
I	J	K	L
M	N	O	P

BURTON TOWNSHIP

CLARIDON TWP 233  
 JANUARY 1, 1992  
 RELATIVE REPRESENTATION



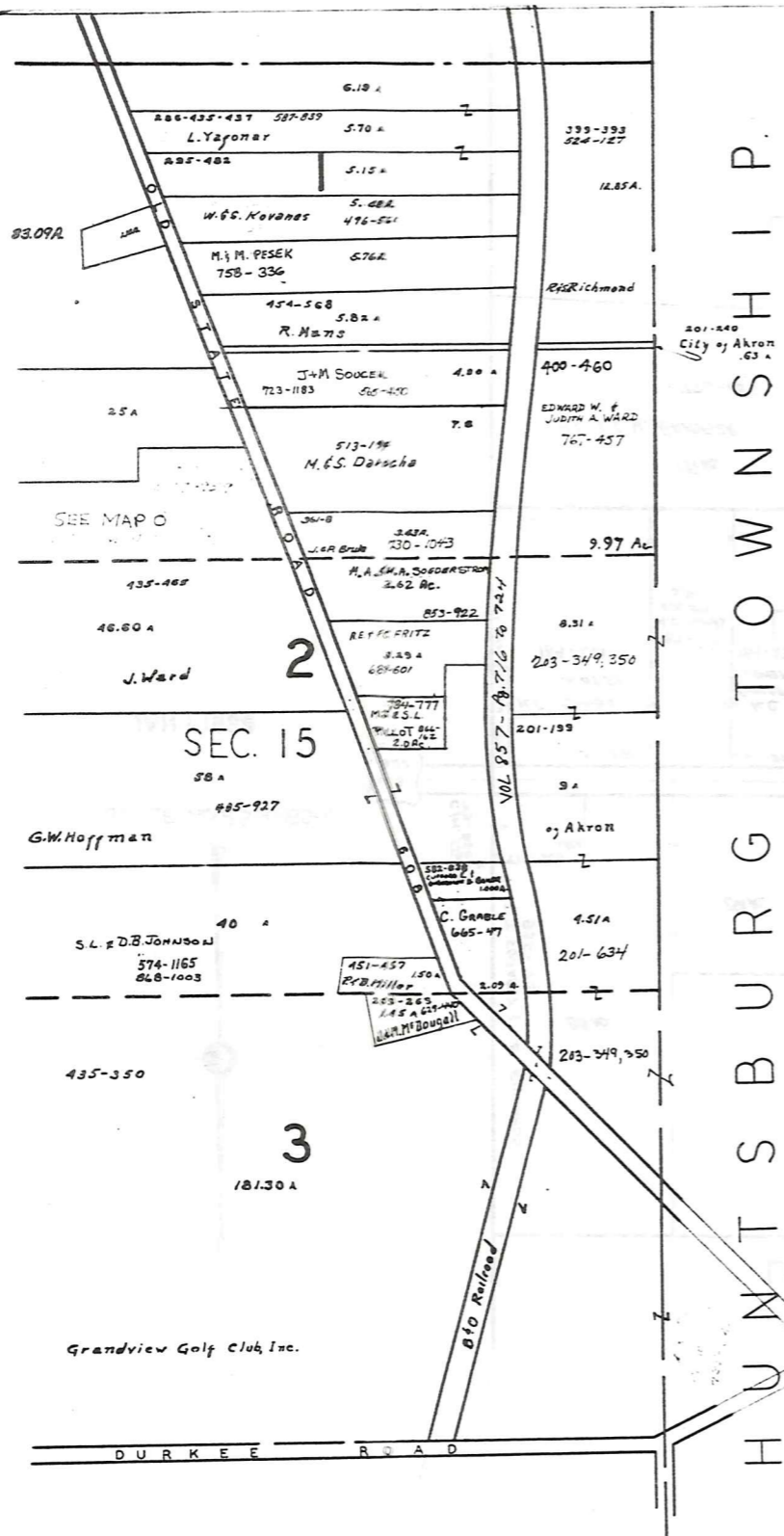
SCALE 1" = 300'

A	B	C	D
E	F	G	H
I	J	K	L
M	N	O	P

\* Inadequate description

CLARIDON TWP.

JANUARY 1, 1992  
RELATIVE REPRESENTATION



SECTION 15

HUNTSBURG TOWNSHIP

BURTON TWP.



SCALE 1" = 300'

\* Inadequate description

JANUARY 1, 1992  
RELATIVE REPRESENTATION

A	B	C	D
E	F	G	H
I	J	K	L
M	N	O	P

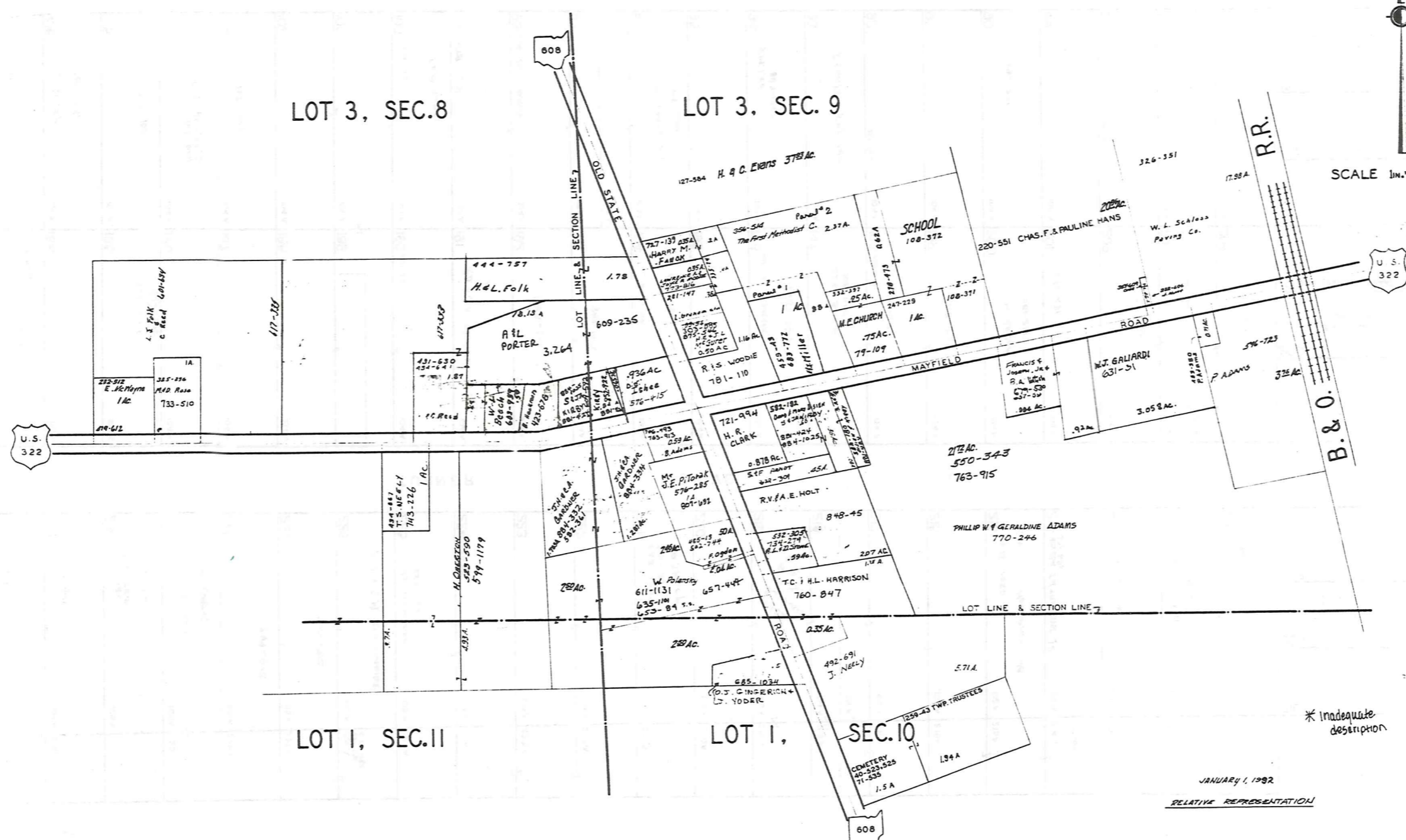
CLARIDON TWP. 235



EAST CLARIDON  
AND VICINITY

# CLARIDON TP.

EAST CLARIDON  
AND VICINITY



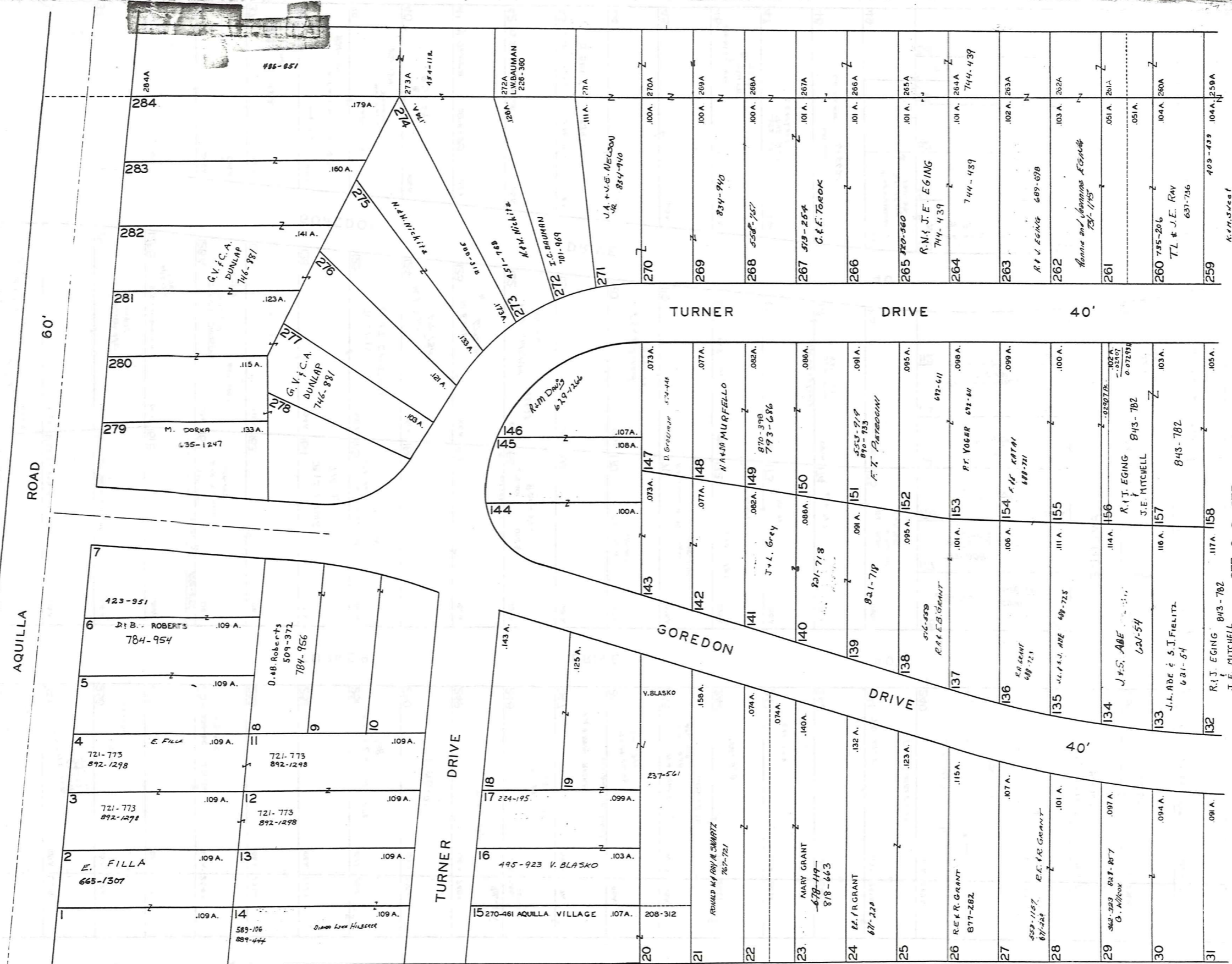
SCALE 1in.=25ch.=165'



\* Inadequate description

JANUARY 1, 1992  
RELATIVE REPRESENTATION

SCALE 1IN.=30FT.



LAKE AQUILLA SUBDIVISION NO. 1 & LAKE AQUILLA SUBDIVISION NO. 1 ADDITION  
 VOL. 1 PGS 50 & 51 REC. OF PLATS      VOL. 4 PGS 23 & 24 REC. OF PLATS

LAKE AQUILLA VILLAGE VOL. 4 PAGES 26-27 REC. OF PLATS

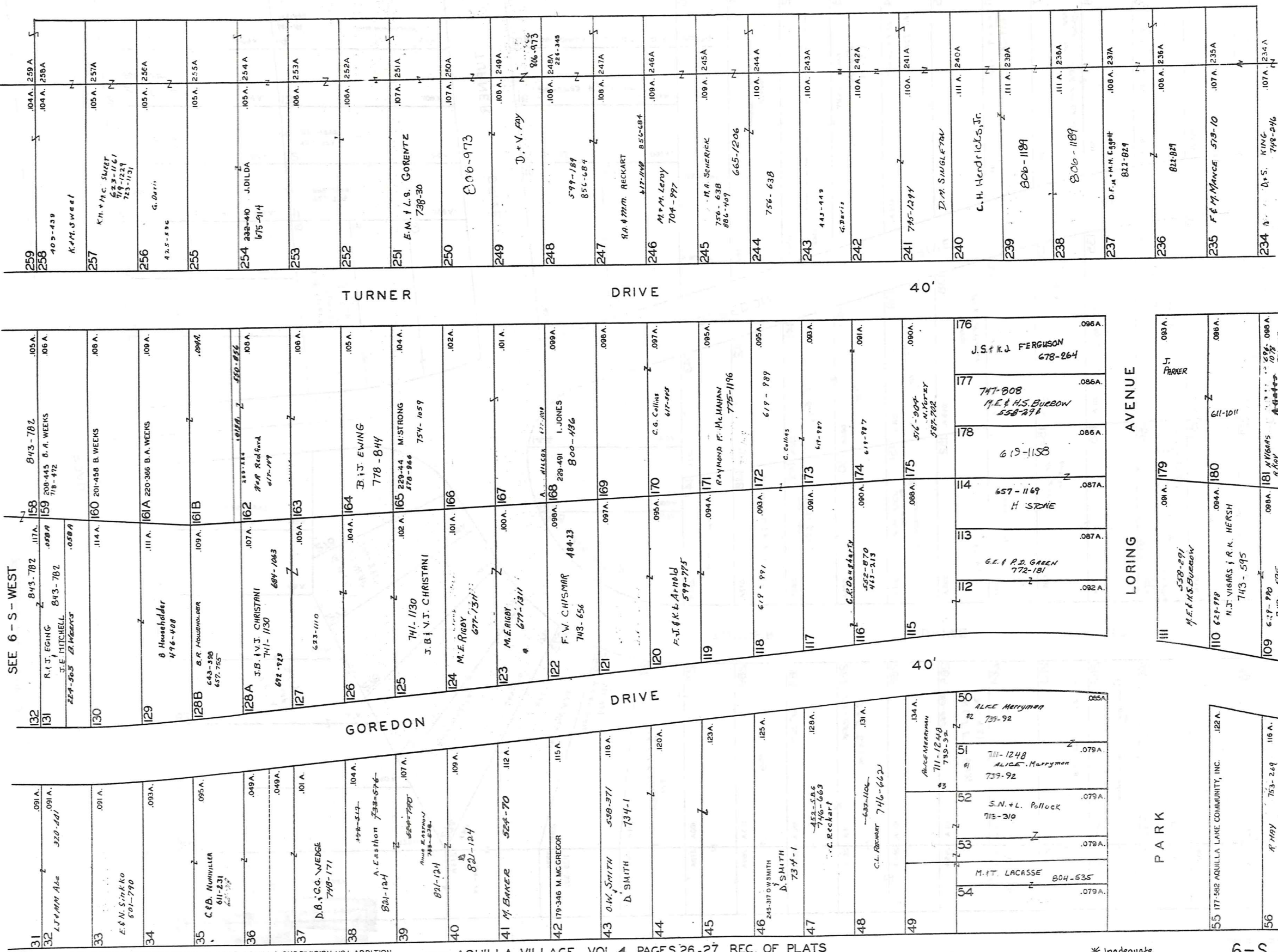
JANUARY 1, 1992 RELATIVE REPRESENTATION

\* Inadequate description

SCALE 1 IN. = 30 FT.

SEE 6 - S - WEST

SEE 6 - S - EAST



LAKE AQUILLA SUBDIVISION NO. 1 & LAKE AQUILLA SUBDIVISION NO. 1 ADDITION  
 VOL. 1 PGS 50 & 51 REC. OF PLATS VOL. 4 PGS 23 & 24 REC. OF PLATS

NOW AQUILLA VILLAGE VOL. 4 PAGES 26-27 REC. OF PLATS  
 JAN. 1, 1992 RELATIVE REPRESENTATION

\* Inadequate description

6-S CTR.

SCALE 1"=30 FT.

57	703-803	J. Pierce	.110A
58	881-960 592-11	E. C. Graves	.106A
59	886-960 851-726	E. C. Graves	.104A
60	179-381	J.B. & L. CHAPARD	.103A
61	524-79 886-960	E. C. Graves	.103A
62	524-642 886-960		.103A
63		G. F. Davis	.103A
64		484-742	.103A
65	185-402	J. J. ZEMETA ET AL	.103A
66		D. E. LERCH 717-1047	.103A
67			.103A
68			.103A
69	653-174	C. S. Caatili	.103A
70		R. ALEX. SOU 635-686	.102A
71			.102A
72			.102A
73		R. J. NIKHARY	.102A
74		887-454	.102A
75		185-923 V. B. BASK	.102A
76		192-600 H.C. & H.M. HECKER	.102A
77		1/2 INT 631-1104 L. Shea & F.R.R. 631-1104 L. Shea & F.R.R. 631-1104 L. Shea & F.R.R. 631-1104 L. Shea & F.R.R.	.102A
78			.102A
79		631-1031 J. & M. BRIGGS	.102A
80		D.A. LOFTUS J.L. DeGUIBERT 571-1318	.092A
81			.092A
82			.103A

SEE 6-S-CTR.

108		L. B. CARBONIE 800-1128	.101A
107			.103A
106		E. BEIFUS 763-1051	.104A
105			.104A
104		763-1051	.104A
103		762-644 C. R. HARPER, JR.	.104A
102			.104A
101			.104A
100		410-89	.104A
99		R. M. MATICE 509-789	.104A
98		224-284 S. VARCO	.104A
97			.052A
96		American Housing Trust II 819-684	.104A
95			.104A
94		S. M. LEE 883-1069	.104A
93			.104A
92		S. J. SMITH 573-144	.104A
91			.104A
90		886-231	.104A
89			.104A
88			.104A
87		J & E RIDER	.052A
86			.104A
85			.082A
84		233-249 L. ZINNER	.092A
83			.115A
82		J & E RIDER 538-1118	.104A
81			.092A
80			.104A
79			.104A
78			.104A
77			.104A
76			.104A
75			.104A
74			.104A
73			.104A
72			.104A
71			.104A
70			.104A
69			.104A
68			.104A
67			.104A
66			.104A
65			.104A
64			.104A
63			.104A
62			.104A
61			.104A
60			.104A
59			.104A
58			.104A
57			.104A

233		D. S. KING 748-246	.107A
232		422-78 G. Cahill	.107A
231		762-849	.108A
230		418-186 592-1120 E.A. Soika	.108A
229		663-400 RER. CAROS	.108A
228			.105A
227		749-912	.105A
226		749-912	.105A
225		F. J. & S. M. STROMMEIER F. J. & S. M. STROMMEIER 653-769	.105A
224		239-07	.104A
223			.104A
222			.104A
221		425-1037 574-796 R. Sharp	.104A
220			.103A
219			.103A
218		E. L. S. Bilkowski 703-1515 883-184	.051A
217			.103A
216			.102A
215		635-1050 C. H. MENDRECKS, JR.	.102A
214		185-354 J. M. TRAVERSE JR 671-676	.102A
213		285-1081 R. TARRANTINO	.101A
212		251-241 S. J. CENTA 783-802	.101A
211		245-308 S. J. CENTA	.101A
210			.092A
209		C. L. MANNING 782-1140	.092A
208			.103A
207			.105A
206		R. M. Pawlicki 697-841	.092A
205		188-229 AQUILA LAKE COM.	.092A
204			.104A
203			.052A
202			.052A
201			.104A
200			.104A
199			.104A
198			.104A
197			.104A
196			.104A
195			.104A
194			.104A
193			.104A
192			.104A
191			.104A
190			.104A
189			.104A
188			.104A
187			.104A
186			.104A
185			.104A
184			.104A
183			.102A
182			.100A
181			.100A

**AQUILLA VILLAGE VOL. 4, PAGES 26-27 REC. OF PLATS**  
 FORMERLY  
**LAKE AQUILLA ESTATES COMPANY'S SUBDIVISION NO. 1**

AND RESUBDIVISION OF BLOCKS I & J AND SUBLOTS  
 NOS. 125 TO 141 INCLUSIVE IN BLOCK D

VOL. 2 PAGES 6, 7, 8, 9, 10, 11, 12, 19 & 33 REC. OF PLATS

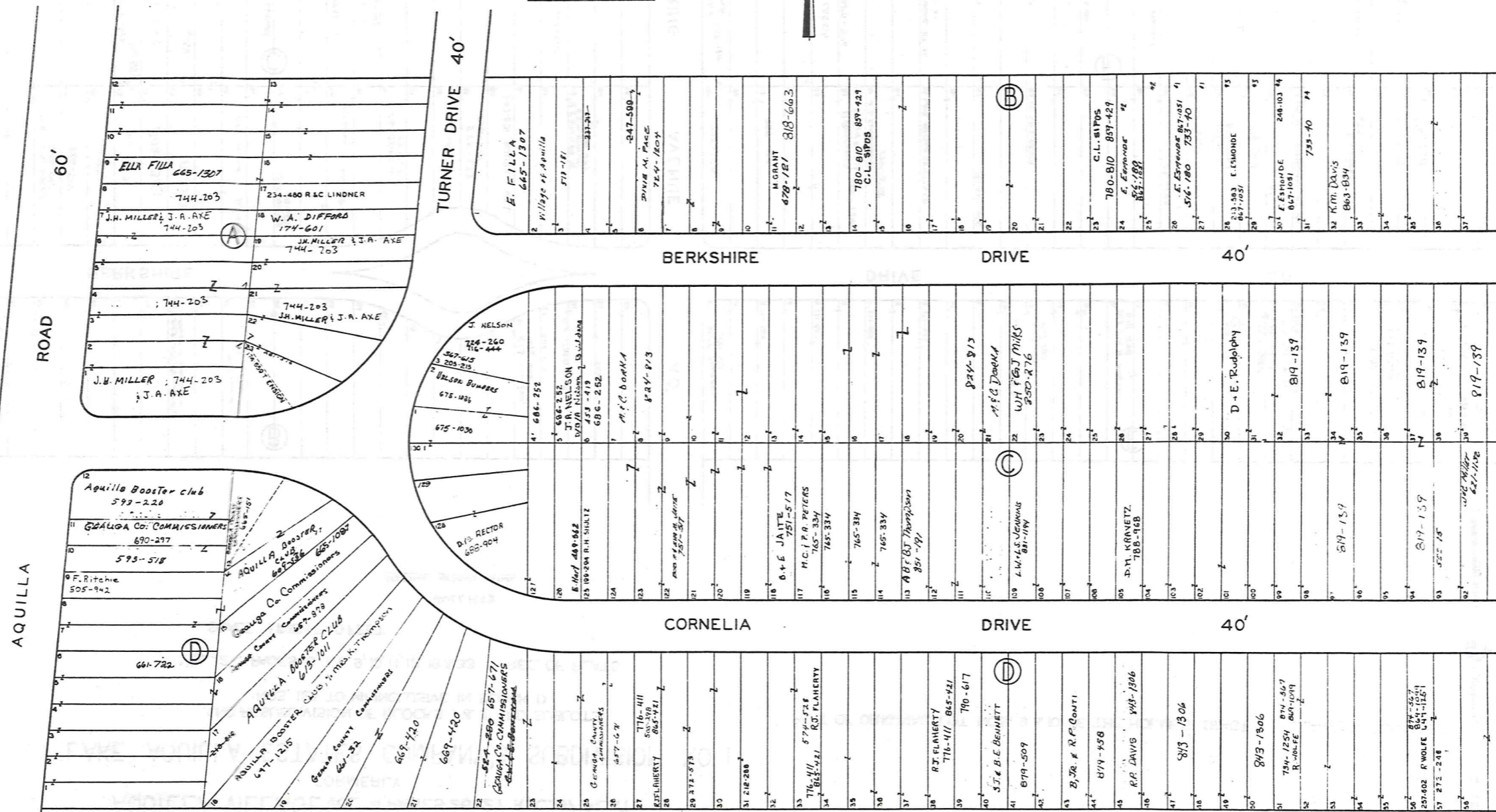
SCALE 1 INCH = 40 FEET

PART OF ORIGINAL LOT NOS. 9 & 10 OF THE HOLMES TRACT CLARIDON TOWNSHIP



JAN. 1, 1999

RELATIVE REPRESENTATION



SEE 6-T-2

\* Inadequate description

AQUILLA VILLAGE VOL. 4, PAGES 26-27 REC. OF PLATS  
FORMERLY  
LAKE AQUILLA ESTATES COMPANY'S SUBDIVISION NO. 1

PART OF ORIGINAL LOT NOS. 9 & 10 OF THE HOLMES TRACT CLARIDON TOWNSHIP

AND RESUBDIVISION OF BLOCKS I & J AND SUBLOTS  
NOS. 125 TO 141 INCLUSIVE IN BLOCK D

VOL. 2 PAGES 6, 7, 8, 9, 10, 11, 12, 19 & 33 REC. OF PLATS

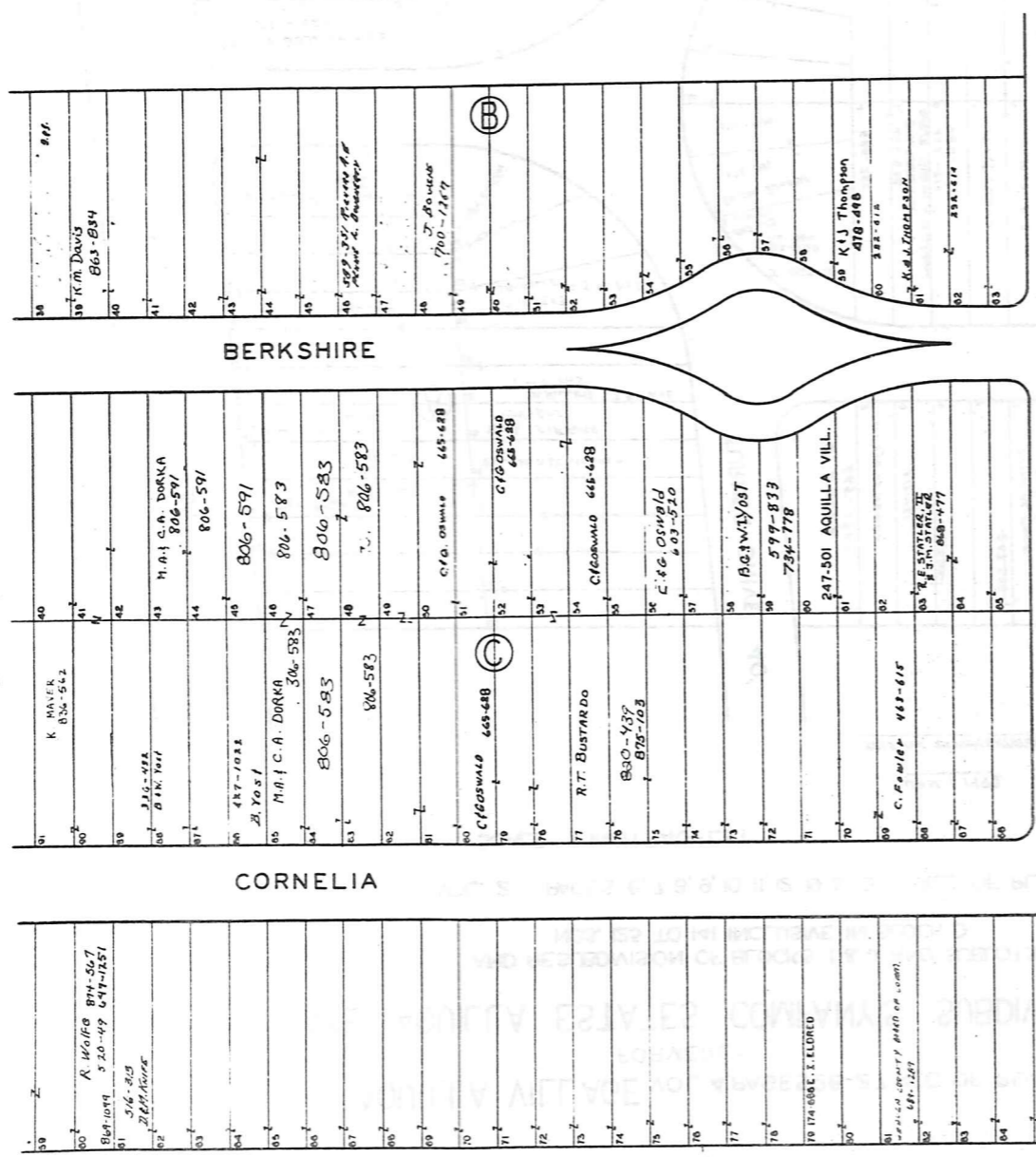
SCALE 1 INCH = 40 FEET

JAN. 1, 1992

RELATIVE REPRESENTATION



SEE 6-T-1

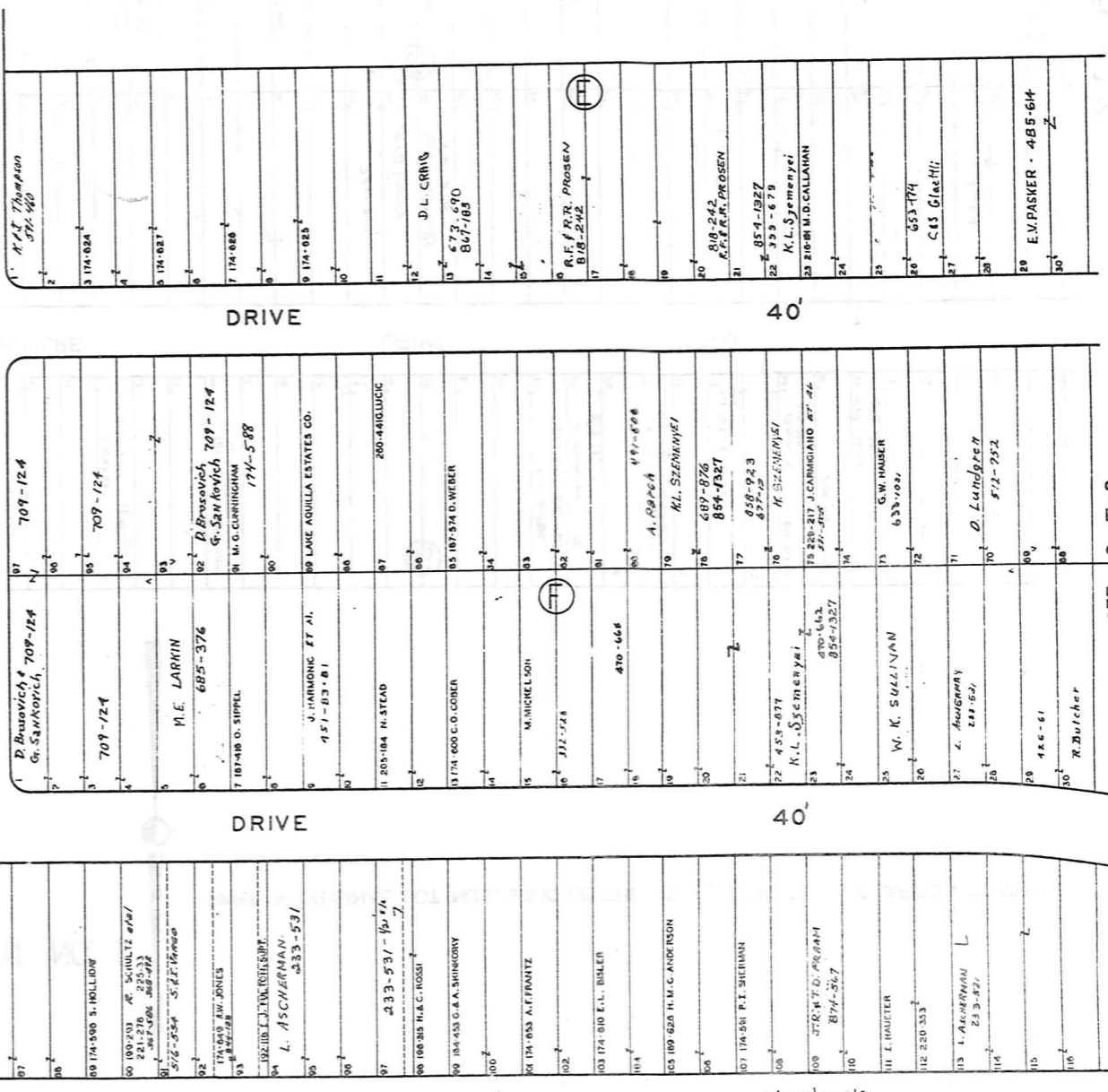


40'

40'

40'

40'



40'

40'

SEE 6-T-3

\* inadequate description

6-T-2

SEE 6-T-2



AQUILLA VILLAGE VOL. 4 PAGES 26-27 REC. OF PLATS  
 FORMERLY  
 LAKE AQUILLA ESTATES COMPANY'S SUBDIVISION NO. 1  
 AND RESUBDIVISION OF BLOCKS I & J AND SUBLOTS  
 NOS. 125 TO 141 INCLUSIVE IN BLOCK D  
 PART OF ORIGINAL LOT NOS. 9 & 10 OF THE HOLMES TRACT CLARIDON TOWNSHIP  
 VOL. 2 PAGES 6, 7, 8, 9, 10, 11, 12, 19 & 33 REC. OF PLATS  
 SCALE 1 INCH = 40 FEET



JAN 1, 1992  
 RELATIVE REPRESENTATION

\* Inadequate description

SEE 6-T-4

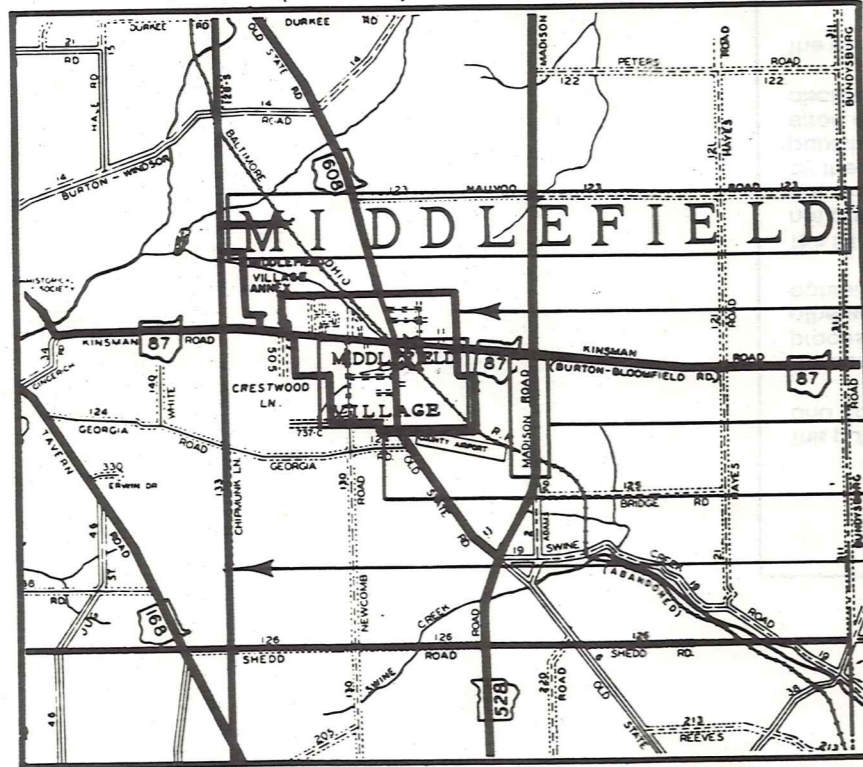
6-T-3



# Explanation and Use Sheet for Geauga County, Ohio

A

SAMPLE (PARTIAL) COUNTY INDEX MAP



Tract Lot Number

Acreage

Township Name

Village Boundary

Street Name

Village Name

Township Boundary

Owners Name

Denotes Continuous Ownership

Deed Book & Page

Map Page Number

Township Name

Village Name

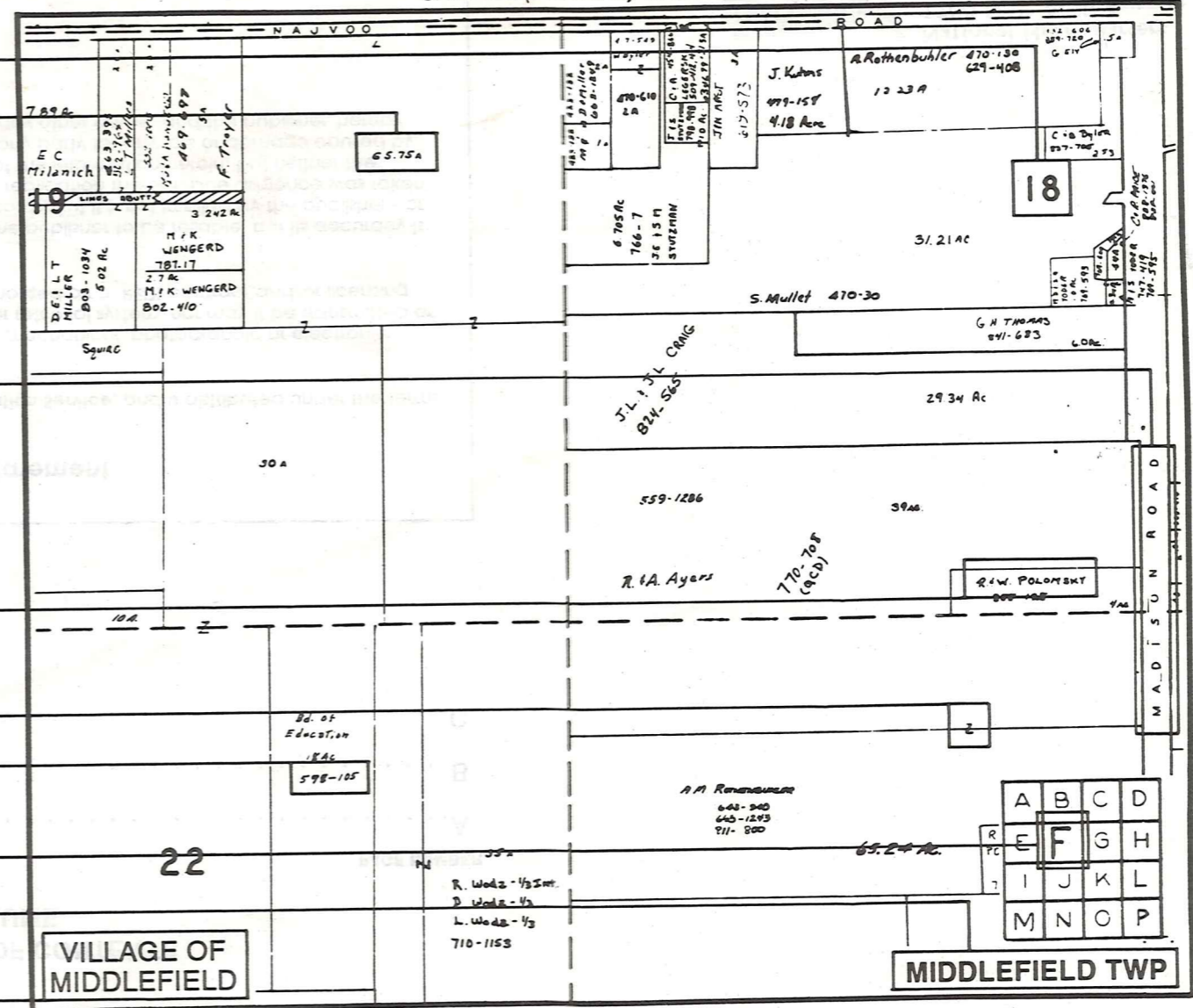
Village Boundary

Street Name

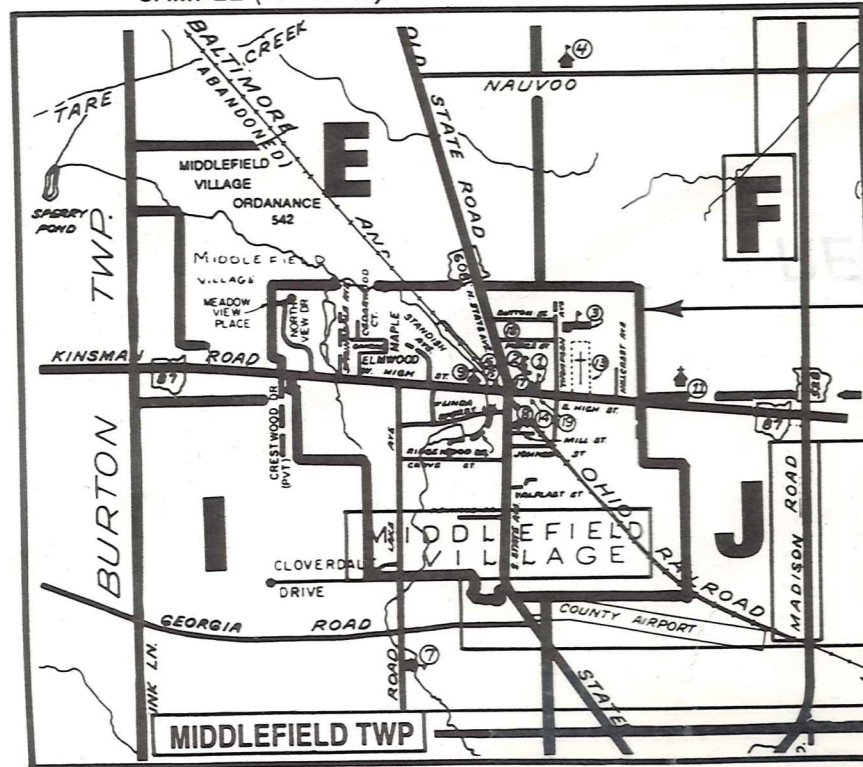
Village Name

Township Name

SAMPLE (PARTIAL) MAP PAGE



SAMPLE (PARTIAL) MUNICIPALITY INDEX MAP



## USE OF THE MAP VOLUME

- LOCATE THE GENERAL AREA OF INTEREST ON THE COUNTY INDEX MAP AND NOTE THE MUNICIPALITY NAME (TOWNSHIP OR VILLAGE).
  - REFER TO THE TABLE OF CONTENTS AND NOTE THE BEGINNING ATLAS PAGE NUMBER FOR THE MUNICIPALITY OF INTEREST.
  - TURN TO THE PAGE INDICATED, ON THIS PAGE WILL APPEAR AN INDEX MAP FOR THAT MUNICIPALITY.
  - LOCATE THE GENERAL AREA OF INTEREST AND NOTE THE MAP PAGE NUMBER. THIS MAY BE EITHER A LETTER OR A NUMBER.
  - MAP PAGES ARE IN ALPHABETICAL (OR NUMERICAL) SEQUENCE FOLLOWING THE MUNICIPALITY INDEX MAP. FOLLOW SEQUENCE TO THE MAP PAGE INDICATED.
  - LOCATE SPECIFIC PARCEL OF INTEREST AND NOTE THE DESIRED INFORMATION.
- NOTE: ON SOME MAPS YOU MAY BE REFERRED TO A DETAIL SHEET SHOWING AN ENLARGEMENT OF THE AREA. THESE MAPS ARE FOUND AT THE END OF THE REGULAR MAP PAGES IN EACH MUNICIPALITY IN EITHER ALPHABETICAL OR NUMERICAL SEQUENCE.
- NOTE: CHARDON VILLAGE HAS TITLE SHEETS. TO LOCATE OWNERS NAME, NOTE THE PARCEL NUMBER, REFER TO THE TITLE PAGE FOLLOWING THE MAP OF INTEREST, FOLLOW NUMERICAL SEQUENCE TO THE PARCEL NUMBER OF INTEREST AND NOTE THE DESIRED INFORMATION. IN ALL OTHER MUNICIPALITIES THE OWNERS NAME APPEARS ON THE MAP PAGE.